

SOCIEDAD ANONIMA



Elementos de fijación rápida
Elements de fixation rapide
Quick attachment devices
Schnellen befestigungselemente

A - 2026

Elementos de fijación rápida

Los elementos de fijación rápida SINARD constituyen la solución ideal para la unión de estructuras metálicas o de hormigón con otros elementos: Cables, tubos, bandejas, abrazaderas, falsos techos, etc.

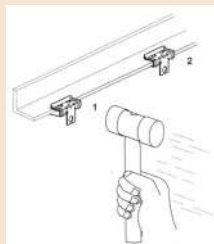
Se caracterizan por las siguientes ventajas:

RAPIDEZ: El montaje comporta un auténtico ahorro de tiempo y dinero para los instaladores.

AMPLIA GAMA: Piezas combinadas para adaptarse a cualquier necesidad.

SEGURIDAD Y COMODIDAD: No es preciso taladrar la estructura metálica.

ACABADOS: Todos los elementos de fijación SINARD disponen de una capa anticorrosiva.



MODO DE EMPLEO

La colocación de los elementos de fijación es fácil y rápida, en la mayoría de los casos basta con un simple golpe de martillo.

CARGAS DE APLICACIÓN

Los elementos de fijación SINARD se ensayan y comprueban, aplicándose un

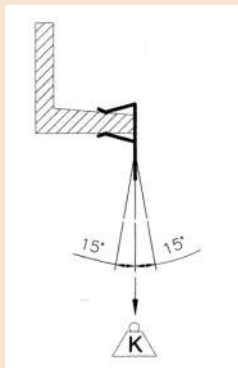
coeficiente de seguridad de 3.

Ej: Ensayos Sinard Positivos a 150 Kg = 50 Kg Catálogo

Los valores de carga expresadas se entienden como límites para cargas estáticas aplicadas verticalmente a la estructura o instalación.

Cuando las fijaciones se combinan entre sí, el valor de carga lo determina el elemento de menor capacidad.

Si la estructura a la que se cuelga la fijación tiene un valor de carga menor que la fijación, ésta determinará el valor de carga máxima a aplicar.



MATERIAL UTILIZADO

Acero al carbono para muelles según Norma DIN 17222(UNE-EN10132-4). Acero que después de un temple y revenido adquiere una dureza HRC 43+50

PROTECCIÓN CONTRA LA CORROSIÓN

Color Negro

Para interiores y ambientes no corrosivos

Acabado Sinard

Para interiores, exteriores, ambientes húmedos o ligeramente corrosivos

- Recubrimiento no electrolítico, compuesto de láminas de cinc y de aluminio fijándose mediante reacción química sobre la superficie del acero.

- Recubrimiento no hidrogenante (sin electrólisis ni decapados ácidos)

- Conductividad eléctrica. Alta resistencia a la temperatura.

- Libre de cromo VI y cromo III. Valores de fricción reducidos.

- Alta protección contra la corrosión Protección catódica.

- Óptica: Gris - Plata

RESISTENCIA a la corrosión en cámara de niebla salina de hasta 480 h (DIN 50021).

NOTA

Debido a las mejoras industriales, S.A. SINARD se reserva el derecho a modificar el diseño de las fijaciones ilustradas respetando la característica de carga estática.

Elements de fixation rapide

Les éléments de fixation rapide SINARD constituent la solution idéale pour l'union de structures métalliques ou en béton avec d'autres éléments: Câbles, tubes, plateaux, colliers, plafonds suspendus, etc.

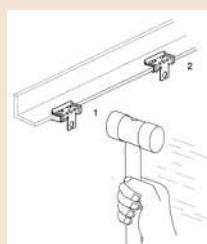
Ils se caractérisent par les avantages suivants :

RAPIDITÉ: Le montage représente une authentique économie de temps et d'argent pour les installateurs.

VASTE GAMME: Pièces combinées pour qu'elles s'adaptent à tout besoin.

SÉCURITÉ ET COMMODITÉ: Il n'est pas nécessaire de trouser la structure métallique.

FINITIONS: Tous les éléments de fixation SINARD sont recouverts d'une couche anticorrosive.



MODO D'EMPLOI

La pose des éléments de fixation est facile et rapide. Dans la majorité des cas, un simple coup de marteau suffit.

CHARGES D'APPLICATION

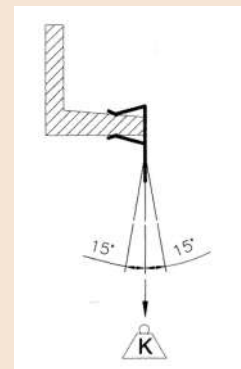
Les éléments de fixation SINARD sont testés et contrôlés, un coefficient de sécurité 3 étant appliqué.

Ex. : Tests Sinard Positifs à 150 Kg = 50 Kg Catalogue

Les valeurs de charge exprimées sont à interpréter comme limites pour des charges statiques appliquées verticalement à la structure ou à l'installation.

Quand les fixations sont combinées entre elles, la valeur de charge est déterminée par l'élément dont la capacité est la moins élevée.

Si la structure à laquelle est posée la fixation a une valeur de charge inférieure à celle de la fixation, celle-ci déterminera la valeur de charge maximale à appliquer.



MATÉRIAU UTILISÉ

Acier au carbone pour les ressorts selon la Norme DIN 17222(UNE-EN10132-4). Acier qui, après un trempage et un revenu, acquiert une dureté HRC 43+50

PROTECTION ANTI CORROSIVE

Couleur Noire

Pour intérieurs et ambiances non corrosives.

Finition Sinard

Pour intérieur, extérieur, ambiances humides ou légèrement corrosives

- Revêtement non électrolytique, composé de feuilles de zinc et d'aluminium fixées au moyen d'une réaction chimique sur la surface de l'acier.

- Revêtement non hydrogénant (sans électrolyse ni décapages acides)

- Conductivité électrique. Haute résistance à la température.

- Sans chrome VI ni chrome III. Valeurs de friction réduites.

- Haute protection contre la corrosion. Protection cathodique.

- Optique : Gris - Argent

RÉSISTENCE à la corrosion en chambre de brouillard salin atteignant 480 h (DIN 50021).

NOTE

Grâce aux améliorations industrielles, S.A. SINARD se réserve le droit de modifier le dessin des fixations illustrées en respectant la caractéristique de charge statique.



Quick attachment devices

SINARD quick attachment devices are the ideal solution for joining metal or concrete structures with other elements: Cables, pipes, trays, clamps, false ceilings, etc.

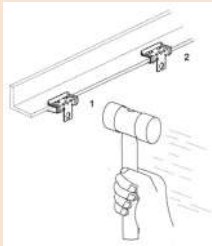
They are characterised by the following advantages:

SPEED: Assembly means real savings in time and money for installers.

WIDE RANGE: Parts combined to adapt to any requirement.

SAFETY AND COMFORT: It is not necessary to drill the metal structure.

FINISHES: All SINARD fixing elements have a rustproof layer.



INSTRUCTIONS FOR USE

It is easy and quick to fit the fixing elements, in most cases by simply using a hammer.

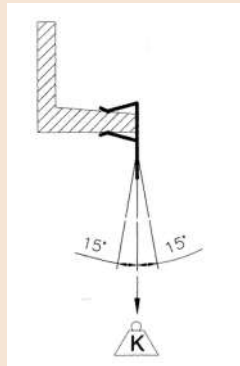
APPLICATION LOADS

SINARD fixing elements are tested and checked by applying a safety coefficient of 3.

E.g.: Sinard Positive tests at 150 Kg = 50 Kg Catalogue
The loads presented are understood as limits for static loads applied vertically to the structure or installation.

When the fixtures are combined, the load value is determined by the element with least capacity.

If the structure upon which the fixture is hung has a smaller load value than the fixture, it will be the structure that will determine the maximum load to be applied.



MATERIAL USED

Carbon steel for springs according to DIN 17222 (UNE-EN10132-4). Steel that after tempering and shrinking acquires a hardness of HRc 43÷50

ANTI- RUST SURFACE FINISH

Black colour

For interiors and non corrosive environments.

Sinard finishing

For interiors, exteriors, damp or slightly corrosive environments

- Non electrolytic coating comprising zinc and aluminium layers fixed to the surface of the steel by chemical reaction.

- Non hydrogenating coating (without electrolysis or acid scaling)

- Electrical conductivity. High resistance to temperature.

- Free of chrome VI and chrome III. Low friction values.

High protection against cathodic corrosion.

- View: Silver grey

RESISTANCE to corrosion in saline mist for up to 480 hours (DIN 50021).

NOTE

Due to industrial improvements, S.A. SINARD reserves the right to modify the design of the illustrated fixtures while respecting the static load characteristic.



Schnellen Befestigungselemente

Die schnellen Befestigungselemente von SINARD sind die perfekte Lösung für die Verbindung von Metall- oder Betonstrukturen mit anderen Elementen: Kabel, Rohre, Platten, Schellen, falsche Decken, etc.

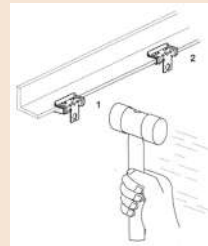
Sie bieten folgende Vorteile:

SCHNELLIGKEIT: Installateure sparen Zeit und Geld bei der Montage.

GRÖÖE VIELFALT: Kombinierte Teile, die sich jedem Bedarf anpassen.

SICHERHEIT UND BEQUEMLICHKEIT: Die Metallstruktur braucht nicht gebohrt zu werden.

ENDVERARBEITUNGEN: Alle SINARD Fixierelemente werden mit einer korrosionsschützenden Beschichtung versehen.



ANWENDUNG

Die Anbringung der Fixierelemente erfolgt schnell und einfach. In den meisten Fällen genügt ein einfacher Hammerschlag.

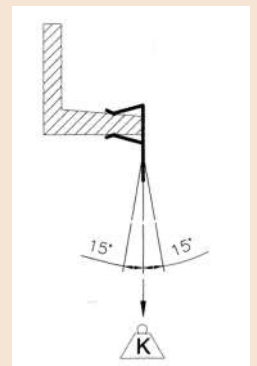
GELTENDE BELASTUNGSWERTE

SINARD Fixierelemente werden mit dem Sicherheitskoeffizient 3 getestet und geprüft.

Beispiel: Positive Sinard Prüfungen bei 150 Kg = 50 Kg im Katalog.

Die angegebenen Belastungswerte sind Grenzwerte für statische Lasten, die senkrecht auf die Struktur oder Anlage einwirken.

Wenn Fixierelemente miteinander kombiniert werden, wird der Belastungswert von dem Element mit geringerer Kapazität bestimmt. Wenn die Struktur an der das Fixierelement angebracht wird einen geringeren Belastungswert als das Fixierelement hat, ist die Struktur für die Angabe des Belastungshöchstwertes maßgebend.



EINGESETZTES MATERIAL

Kohlenstoff-Federstahl nach DIN 17222 (UNE-EN10132-4). Gehärtet und angelassen auf HRc 43÷50

KORROSIONSSCHUTZ

Schwarze Farbe

Für Innenbereiche und nicht korrodierenden Umgebungen.

Sinard Endverarbeitung

Für Innen- und Außenbereiche, feuchte oder leicht korrodierenden Umgebungen

- Nicht-elektrolytische Beschichtung aus Zink- und Aluminiumlamellen, die durch chemische Reaktion auf die Stahlfläche haften.

- Nicht hydrierende Beschichtung (weder durch Elektrolyse noch durch Beizen mit Säure)

- Elektrische Leitfähigkeit. Hohe Temperaturfestigkeit.

- Kein Chrom-VI und Chrom-III Gehalt. Geringe Reibungswerte.

- Hoher Korrosionsschutz. Kathodischer Schutz.

- Aussehen: Grau - Silber

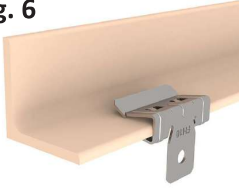
KORROSIONSFEST in einer Salznebelkammer bis zu 480 h (DIN 50021).

ANMERKUNG

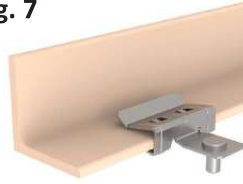
Angesichts der ständigen Verbesserungen im Industriebereich, behält sich S.A. SINARD das Recht vor, das Design der hier gezeigten Fixierelemente zu ändern, jedoch unter Beibehaltung der Eigenschaften in Bezug zu der statischen Last.



pag. 6



pag. 7



pag. 8



pag. 9



pag. 10



pag. 11



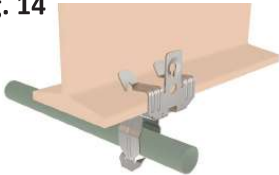
pag. 12



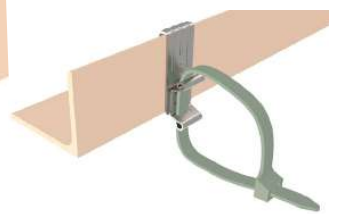
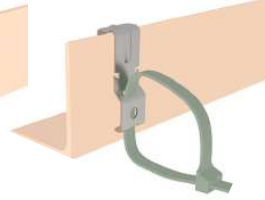
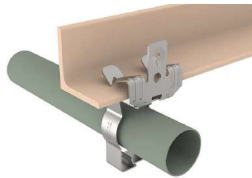
pag. 13



pag. 14



pag. 15



pag. 16



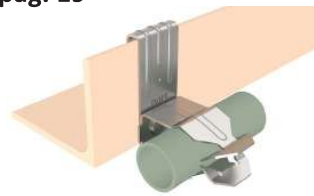
pag. 17



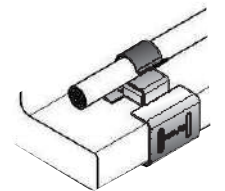
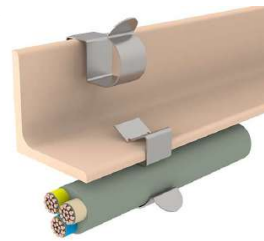
pag. 18



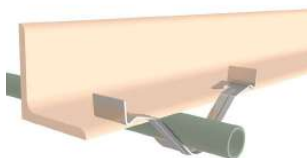
pag. 19



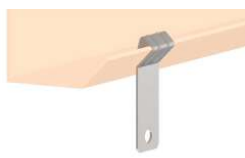
pag. 20



pag. 21



pag. 22

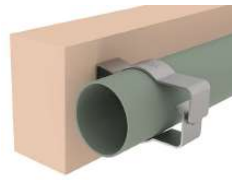
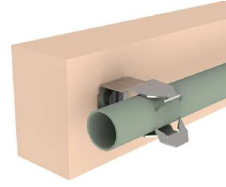
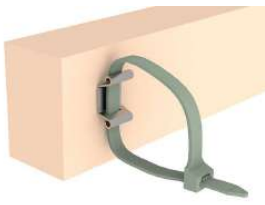




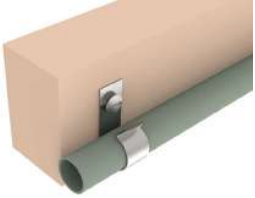
pag. 23



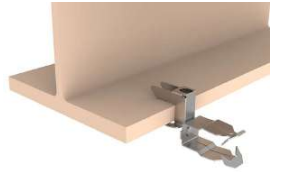
pag. 24



pag. 25



pag. 26



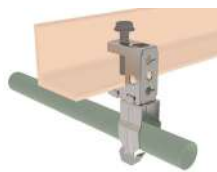
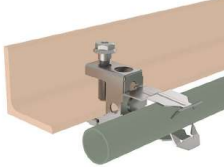
pag. 27



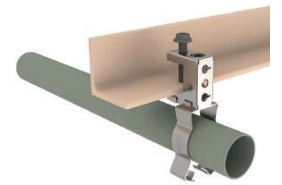
pag. 28



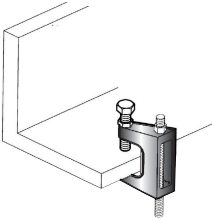
pag. 29



pag. 30



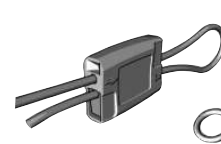
pag. 31



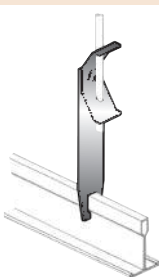
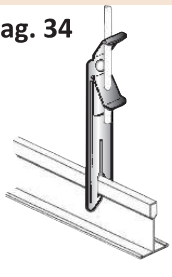
pag. 32



pag. 33



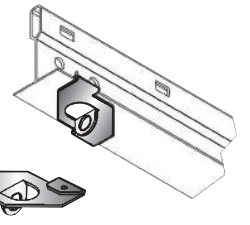
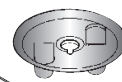
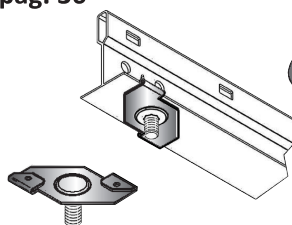
pag. 34



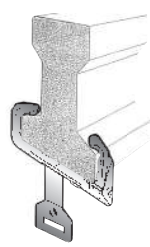
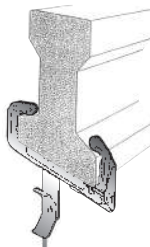
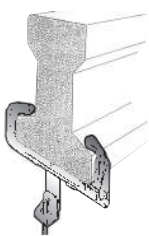
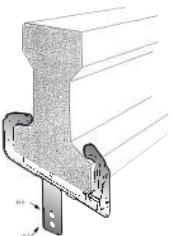
pag. 35



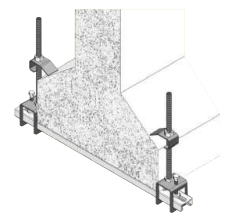
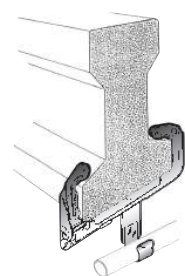
pag. 36



pag. 37

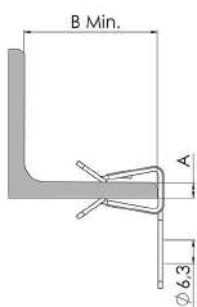


pag. 38



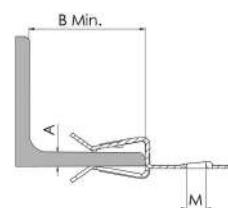


FH



Cód.	Ref.	A mm.	B mm.	Kg.		€/100
ACABADO NEGRO / BLACK FINISHING						
10013001	FH4 (100)	1,5 – 4	18	70	100	34,70
10013002	FH10 (101)	4 – 10	25	90	100	48,90
10013003	FH15 (102)	10 – 15	25	90	100	54,20
10013004	FH20 (103)	15 – 20	25	90	100	59,00
ACABADO SINARD GRIS / GREY SINARD FINISHING						
1001300150	FH4 DT (100 DT)	1,5 – 4	18	70	100	45,20
1001300250	FH10 DT (101 DT)	4 – 10	25	90	100	63,40
1001300350	FH15 DT (102 DT)	10 – 15	25	90	100	70,40
1001300450	FH20 DT (103 DT)	15 – 20	25	90	100	76,80

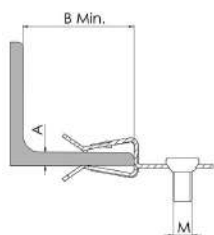
FH AP-R



Cód.	Ref.	A mm.	B mm.	M	Kg.		€/100
ACABADO SINARD GRIS / GREY SINARD FINISHING							
1001319050	FH10 AP-R DT (101 AP-R DT)	4 – 10	18	M6	20	100	108,40
1001319150	FH15 AP-R DT (102 AP-R DT)	10 – 15	25	M6	20	100	117,20

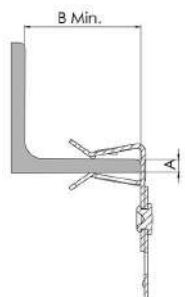


FH AP-T

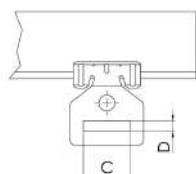


Cód.	Ref.	A mm.	B mm.	M	Kg.		€/100
ACABADO SINARD GRIS / GREY SINARD FINISHING							
1001319550	FH10 AP-T DT (101 AP-T DT)	4 – 10	18	M6x9	20	100	149,30
1001319650	FH15 AP-T DT (102 AP-T DT)	10 – 15	25	M6x9	20	100	160,20

FH-SH

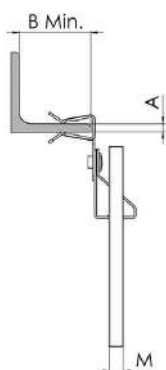



Cód.	Ref.	A mm.	B mm.	CxD	Kg.		€/100
ACABADO SINARD GRIS / GREY SINARD FINISHING							
1001305450	FH4-SH DT (100-230 DT)	1,5 – 4	18	28 x 6,5	45	100	68,80
1001306950	FH10-SH DT (101-230 DT)	4 – 10	25	28 x 6,5	45	100	97,10
1001308450	FH15-SH DT (102-230 DT)	10 – 15	25	28 x 6,5	45	100	109,20
1001309950	FH20-SH DT (103-230 DT)	15 – 20	25	28 x 6,5	45	100	122,10





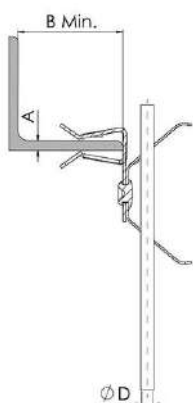
FH-ICA




Cód.	Ref.	A mm.	B mm.	M	Kg.		€/100
ACABADO NEGRO / BLACK FINISHING							
10013049	FH4-ICA6 (100-210)	1,5 – 4	18	M6	70	100	90,70
10013050	FH4-ICA8 (100-211)	1,5 – 4	18	M8	70	100	90,70
10013051	FH4-ICA10 (100-212)	1,5 – 4	18	M10	70	100	90,70
10013064	FH10-ICA6 (101-210)	4 – 10	25	M6	70	100	112,30
10013065	FH10-ICA8 (101-211)	4 – 10	25	M8	70	100	112,30
10013066	FH10-ICA10 (101-212)	4 – 10	25	M10	70	100	112,30
10013079	FH15-ICA6 (102-210)	10 – 15	25	M6	70	100	117,70
10013080	FH15-ICA8 (102-211)	10 – 15	25	M8	70	100	117,70
10013081	FH15-ICA10 (102-212)	10 – 15	25	M10	70	100	117,70
10013094	FH20-ICA6 (103-210)	15 – 20	25	M6	70	100	136,70
10013095	FH20-ICA8 (103-211)	15 – 20	25	M8	70	100	136,70
10013096	FH20-ICA10 (103-212)	15 – 20	25	M10	70	100	136,70
ACABADO SINARD GRIS / GREY SINARD FINISHING							
1001304950	FH4-ICA6 DT (100-210 DT)	1,5 – 4	18	M6	70	100	117,80
1001305050	FH4-ICA8 DT (100-211 DT)	1,5 – 4	18	M8	70	100	117,80
1001305150	FH4-ICA10 DT (100-212 DT)	1,5 – 4	18	M10	70	100	117,80
1001306450	FH10-ICA6 DT (101-210 DT)	4 – 10	25	M6	70	100	146,10
1001306550	FH10-ICA8 DT (101-211 DT)	4 – 10	25	M8	70	100	146,10
1001306650	FH10-ICA10 DT (101-212 DT)	4 – 10	25	M10	70	100	146,10
1001307950	FH15-ICA6 DT (102-210 DT)	10 – 15	25	M6	70	100	152,70
1001308050	FH15-ICA8 DT (102-211 DT)	10 – 15	25	M8	70	100	152,70
1001308150	FH15-ICA10 DT (102-212 DT)	10 – 15	25	M10	70	100	152,70
1001309450	FH20-ICA6 DT (103-210 DT)	15 – 20	25	M6	70	100	177,50
1001309550	FH20-ICA8 DT (103-211 DT)	15 – 20	25	M8	70	100	177,50
1001309650	FH20-ICA10 DT (103-212 DT)	15 – 20	25	M10	70	100	177,50



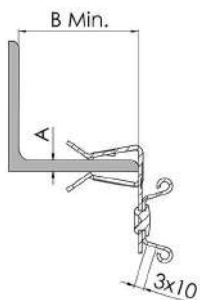
FH-TR



Cód.	Ref.	A mm.	B mm.	Ø D mm.	Kg.		€/100
ACABADO NEGRO / BLACK FINISHING							
10013052	FH4-TR4 (100-220)	1,5 - 4	18	4	60	100	65,70
10013053	FH4-TR6 (100-221)	1,5 - 4	18	6	60	100	65,70
10013067	FH10-TR4 (101-220)	4 - 10	25	4	60	100	87,50
10013068	FH10-TR6 (101-221)	4 - 10	25	6	60	100	87,50
10013082	FH15-TR4 (102-220)	10 - 15	25	4	60	100	92,70
10013083	FH15-TR6 (102-221)	10 - 15	25	6	60	100	92,70
10013097	FH20-TR4 (103-220)	15 - 20	25	4	60	100	106,90
10013098	FH20-TR6 (103-221)	15 - 20	25	6	60	100	106,90
ACABADO SINARD GRIS / GREY SINARD FINISHING							
1001305250	FH4-TR4 DT (100-220 DT)	1,5 - 4	18	4	60	100	85,50
1001305350	FH4-TR6 DT (100-221 DT)	1,5 - 4	18	6	60	100	85,50
1001306750	FH10-TR4 DT (101-220 DT)	4 - 10	25	4	60	100	113,90
1001306850	FH10-TR6 DT (101-221 DT)	4 - 10	25	6	60	100	113,90
1001308250	FH15-TR4 DT (102-220 DT)	10 - 15	25	4	60	100	120,40
1001308350	FH15-TR6 DT (102-221 DT)	10 - 15	25	6	60	100	120,40
1001309750	FH20-TR4 DT (103-220 DT)	15 - 20	25	4	60	100	138,70
1001309850	FH20-TR6 DT (103-221 DT)	15 - 20	25	6	60	100	138,70

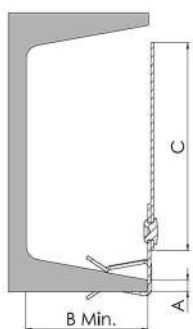


FH-BR



Cód.	Ref.	A mm.	B mm.	Kg.		€/100
ACABADO SINARD GRIS / GREY SINARD FINISHING						
1001317150	FH4-BR DT (100-250 DT)	1,5 - 4	18	15	100	74,90
1001317250	FH10-BR DT (101-250 DT)	4 - 10	25	15	100	93,90
1001317350	FH15-BR DT (102-250 DT)	10 - 15	25	15	100	96,80
1001317450	FH20-BR DT (103-250 DT)	15 - 20	25	15	100	112,80

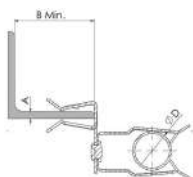
FH-PD



Cód.	Ref.	A mm.	B mm.	C mm.		€/100
ACABADO SINARD GRIS / GREY SINARD FINISHING						
1001305550	FH4-PD DT (100-231 DT)	1,5 - 4	18	75	100	111,10
1001307050	FH10-PD DT (101-231 DT)	4 - 10	25	75	100	116,60
1001308550	FH15-PD DT (102-231 DT)	10 - 15	25	75	100	123,30
1001310050	FH20-PD DT (103-231 DT)	15 - 20	25	75	100	129,70

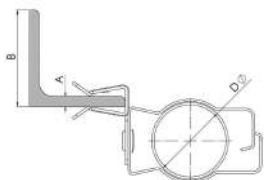


FH-IC



Cód.	Ref.	A mm.	B mm.	∅ D mm.	Kg.		€/100
ACABADO SINARD GRIS / GREY SINARD FINISHING							
1001354350	FH4-IC22 DT (100-280 DT)	1,5 – 4	18	18-22	7	100	109,30
1001354450	FH4-IC30 DT (100-281 DT)	1,5 – 4	18	22-30	7	100	114,60
1001354550	FH4-IC35 DT (100-282 DT)	1,5 – 4	18	30-35	7	100	120,80
1001354650	FH10-IC22 DT (101-280 DT)	4 – 10	25	18-22	7	100	129,40
1001354750	FH10-IC30 DT (101-281 DT)	4 – 10	25	22-30	7	100	134,70
1001354850	FH10-IC35 DT (101-282 DT)	4 – 10	25	30-35	7	100	141,20
1001354950	FH15-IC22 DT (102-280 DT)	10 – 15	25	18-22	7	100	136,90
1001355050	FH15-IC30 DT (102-281 DT)	10 – 15	25	22-30	7	100	142,30
1001355150	FH15-IC35 DT (102-282 DT)	10 – 15	25	30-35	7	100	148,50
1001355250	FH20-IC22 DT (103-280 DT)	15 – 20	25	18-22	7	100	143,70
1001355350	FH20-IC30 DT (103-281 DT)	15 – 20	25	22-30	7	100	149,00
1001355450	FH20-IC35 DT (103-282 DT)	15 – 20	25	30-35	7	100	155,40

FH-ICC



Cód.	Ref.	A mm.	B mm.	∅ D mm.	Kg.		€/100
ACABADO SINARD GRIS / GREY SINARD FINISHING							
1001330450	FH4-ICC25 DT	1,5 – 4	18	20-25	7	100	114,30
1001330550	FH4-ICC32 DT	1,5 – 4	18	26-32	7	100	119,50
1001330650	FH4-ICC40 DT	1,5 – 4	18	33-40	7	100	125,70
1001330750	FH10-ICC25 DT	4 – 10	25	20-25	7	100	133,90
1001330850	FH10-ICC32 DT	4 – 10	25	26-32	7	100	140,10
1001330950	FH10-ICC40 DT	4 – 10	25	33-40	7	100	147,30
1001331050	FH15-ICC25 DT	10 – 15	25	20-25	7	100	142,10
1001331150	FH15-ICC32 DT	10 – 15	25	26-32	7	100	148,30
1001331250	FH15-ICC40 DT	10 – 15	25	33-40	7	100	154,50
1001331350	FH20-ICC25 DT	15 – 20	25	20-25	7	100	150,40
1001331450	FH20-ICC32 DT	15 – 20	25	26-32	7	100	155,50
1001331550	FH20-ICC40 DT	15 – 20	25	33-40	7	100	161,70

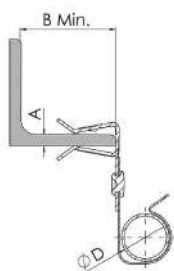



Elementos de fijación rápida
Elements de fixation rapide

Quick attachment devices
Schnellen befestigungselemente



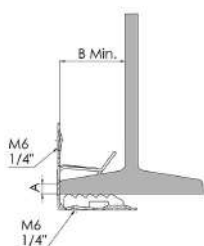
FH-SC



Cód.	Ref.	A mm.	B mm.	Ø D mm.		€/100
ACABADO SINARD GRIS / GREY SINARD FINISHING						
1001305650	FH4-SC14 DT (100-310.1 DT)	1,5-4	18	12-14	100	83,20
1001305750	FH4-SC18 DT (100-312.1 DT)	1,5-4	18	15-18	100	89,90
1001305850	FH4-SC24 DT (100-314.1 DT)	1,5-4	18	19-24	100	94,70
1001305950	FH4-SC30 DT (100-316.1 DT)	1,5-4	18	25-30	100	98,60
1001306050	FH4-SC35 DT (100-317.1 DT)	1,5-4	18	31-35	100	103,30
1001306150	FH4-SC40 DT (100-318.1 DT)	1,5-4	18	36-40	100	117,20
1001306250	FH4-SC45 DT (100-319.1 DT)	1,5-4	18	41-45	100	121,30
1001306350	FH4-SC50 DT (100-320.1 DT)	1,5-4	18	46-50	100	125,50
1001307150	FH10-SC14 DT (101-310.1 DT)	4-10	25	12-14	100	113,80
1001307250	FH10-SC18 DT (101-312.1 DT)	4-10	25	15-18	100	119,40
1001307350	FH10-SC24 DT (101-314.1 DT)	4-10	25	19-24	100	125,10
1001307450	FH10-SC30 DT (101-316.1 DT)	4-10	25	25-30	100	129,00
1001307550	FH10-SC35 DT (101-317.1 DT)	4-10	25	31-35	100	133,30
1001307650	FH10-SC40 DT (101-318.1 DT)	4-10	25	36-40	100	147,30
1001307750	FH10-SC45 DT (101-319.1 DT)	4-10	25	41-45	100	151,50
1001307850	FH 10-SC50 DT (101-320.1 DT)	4-10	25	46-50	100	156,00
1001308650	FH15-SC14 DT (102-310.1 DT)	10-15	25	12-14	100	120,20
1001308750	FH15-SC18 DT (102-312.1 DT)	10-15	25	15-18	100	126,60
1001308850	FH15-SC24 DT (102-314.1 DT)	10-15	25	19-24	100	132,10
1001308950	FH15-SC30 DT (102-316.1 DT)	10-15	25	25-30	100	136,20
1001309050	FH 15-SC35 DT (102-317.1 DT)	10-15	25	31-35	100	140,50
1001309150	FH 15-SC40 DT (102-318.1 DT)	10-15	25	36-40	100	154,40
1001309250	FH 15-SC45 DT (102-319.1 DT)	10-15	25	41-45	100	158,60
1001309350	FH 15-SC50 DT (102-320.1 DT)	10-15	25	46-50	100	163,00
1001310150	FH20-SC14 DT (103-310.1 DT)	15-20	25	12-14	100	134,60
1001310250	FH20-SC18 DT (103-312.1 DT)	15-20	25	15-18	100	142,40
1001310350	FH20-SC24 DT (103-314.1 DT)	15-20	25	19-24	100	149,00
1001310450	FH20-SC30 DT (103-316.1 DT)	15-20	25	25-30	100	153,50
1001310550	FH20-SC35 DT (103-317.1 DT)	15-20	25	31-35	100	159,20
1001310650	FH20-SC40 DT (103-318.1 DT)	15-20	25	36-40	100	175,90
1001310750	FH20-SC45 DT (103-319.1 DT)	15-20	25	41-45	100	179,10
1001310850	FH20-SC50 DT (103-320.1 DT)	15-20	25	46-50	100	186,10

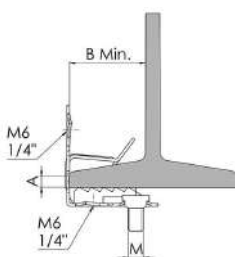
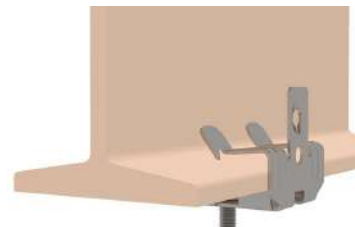


FU



Cód.	Ref.	A mm.	B mm.	Kg.		€/100
ACABADO NEGRO / BLACK FINISHING						
10013005	FU7 (104)	3 - 7	25	45	100	78,30
10013007	FU12'5 (105)	7 - 13	35	45	100	85,90
10013009	FU20 (106)	14 - 20	35	45	100	102,30
ACABADO SINARD GRIS / GREY SINARD FINISHING						
1001300550	FU7 DT (104 DT)	3 - 7	25	45	100	101,80
1001300750	FU12'5 DT (105 DT)	7 - 13	35	45	100	111,60
1001300950	FU20 DT (106 DT)	14 - 20	35	45	100	122,90

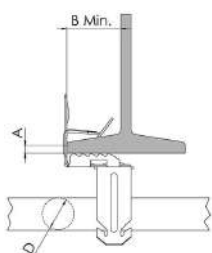
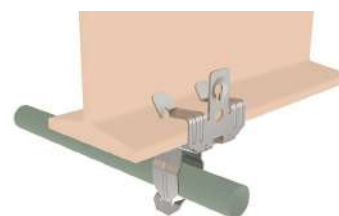
FU-T



Cód.	Ref.	A mm.	B mm.	M	Kg.		€/100
ACABADO NEGRO / BLACK FINISHING							
10013006	FU7 T-M6 (104-T M6)	3 - 7	25	M6x9	45-33	100	103,80
10013008	FU12'5 T-M6 (105-T M6)	7 - 13	35	M6x9	45-33	100	113,90
10013010	FU20 T-M6 (106-T M6)	14 - 20	35	M6x9	45-33	100	131,60
10013206	FU7 T-M8 (104-T M8)	3 - 7	25	M8x9	45-33	100	109,10
10013208	FU12'5 T-M8 (105-T M8)	7 - 13	35	M8x9	45-33	100	119,40
10013210	FU20 T-M8 (106-T M8)	14 - 20	35	M8x9	45-33	100	131,60
ACABADO SINARD GRIS / GREY SINARD FINISHING							
1001300650	FU7 T-M6 DT (104-T M6 DT)	3 - 7	25	M6x9	45-33	100	135,10
1001300850	FU12'5 T-M6 DT (105-T M6 DT)	7 - 13	35	M6x9	45-33	100	147,90
1001301050	FU20 T-M6 DT (106-T M6 DT)	14 - 20	35	M6x9	45-33	100	162,70
1001320650	FU7 T-M8 DT (104-T M8 DT)	3 - 7	25	M8x9	45-33	100	141,80
1001320850	FU12'5 T-M8 DT (105-T M8 DT)	7 - 13	35	M8x9	45-33	100	155,30
1001321050	FU20 T-M8 DT (106-T M8 DT)	14 - 20	35	M8x9	45-33	100	170,90

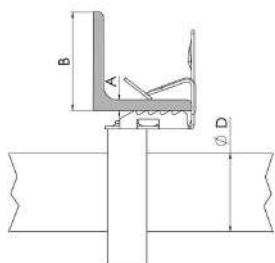
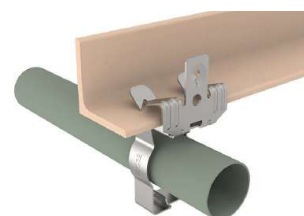


FU-IC



Cód.	Ref.	A mm.	B mm.	∅ D mm.	Kg.		€/100
ACABADO SINARD GRIS / GREY SINARD FINISHING							
1001355550	FU7-IC22 DT (104-280 DT)	3 - 7	25	18-22	11	100	171,00
1001355650	FU7-IC30 DT (104-281 DT)	3 - 7	25	22-30	11	100	176,30
1001355750	FU7-IC35 DT (104-282 DT)	3 - 7	25	30-35	11	100	182,40
1001355850	FU12'5-IC22 DT (105-280 DT)	7 - 13	35	18-22	11	50	181,80
1001355950	FU12'5-IC30 DT (105-281 DT)	7 - 13	35	22-30	11	50	187,20
1001356050	FU12'5-IC35 DT (105-282 DT)	7 - 13	35	30-35	11	50	193,50
1001356150	FU20-IC22 DT (106-280 DT)	14 - 20	35	18-22	11	50	194,30
1001356250	FU20-IC30 DT (106-281 DT)	14 - 20	35	22-30	11	50	199,60
1001356350	FU20-IC35 DT (106-282 DT)	14 - 20	35	30-35	11	50	205,60

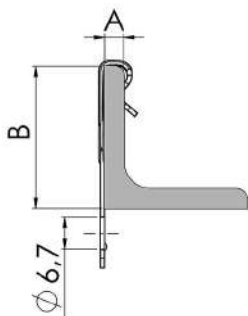
FU-ICC



Cód.	Ref.	A mm.	B mm.	∅ D mm.	Kg.		€/100
ACABADO SINARD GRIS / GREY SINARD FINISHING							
1001331650	FU7-ICC25 DT	3 - 7	25	20-25	11	100	180,20
1001331750	FU7-ICC32 DT	3 - 7	25	26-32	11	100	184,40
1001331850	FU7-ICC40 DT	3 - 7	25	33-40	11	100	190,60
1001331950	FU12'5-ICC25 DT	7 - 13	35	20-25	11	50	192,60
1001332050	FU12'5-ICC32 DT	7 - 13	35	26-32	11	50	196,70
1001332150	FU12'5-ICC40 DT	7 - 13	35	33-40	11	50	200,90
1001332250	FU20-ICC25 DT	14 - 20	35	20-25	11	50	203,90
1001332350	FU20-ICC32 DT	14 - 20	35	26-32	11	50	209,10
1001332450	FU20-ICC40 DT	14 - 20	35	33-40	11	50	216,30

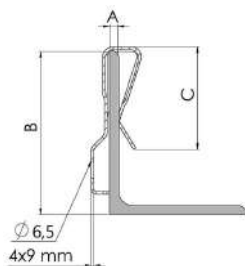
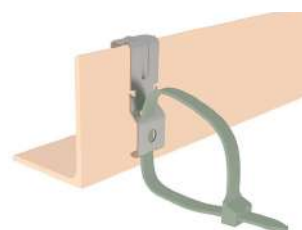


PHV



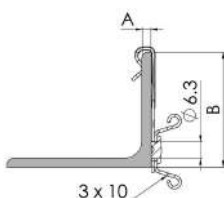
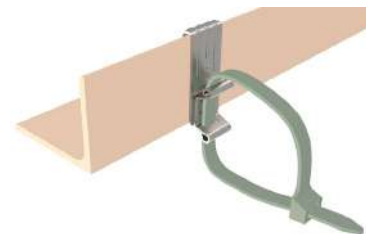
Cód.	Ref.	A mm.	B mm.	Kg.		€/100
ACABADO NEGRO / BLACK FINISHING						
10013011	PHV5 (110)	1,5 - 5	30	70	100	31,40
10013012	PHV7 (111)	5 - 7	30	70	100	31,40
10013014	PHV10 (113)	4 - 10	60	70	100	69,40
ACABADO SINARD GRIS / GREY SINARD FINISHING						
1001301150	PHV5 DT (110 DT)	1,5 - 5	30	70	100	40,80
1001301250	PHV7 DT (111 DT)	5 - 7	30	70	100	40,80
1001301450	PHV10 DT (113 DT)	4 - 10	60	70	100	90,30

PCM



Cód.	Ref.	A mm.	B mm.	C mm.		€/100
ACABADO SINARD GRIS / GREY SINARD FINISHING						
1001301550	PCM10 DT	3 - 10	52	35	100	50,20
1001301650	PCM18 DT	10 - 18	52	35	100	50,20

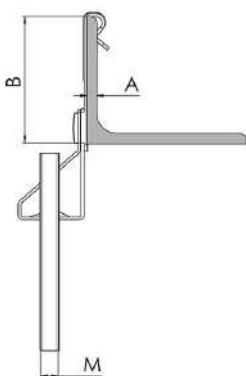
PHV-BR




Cód.	Ref.	A mm.	B mm.	Kg.		€/100
ACABADO SINARD GRIS / GREY SINARD FINISHING						
1001317550	PHV5- BR DT (110-250 DT)	1,5 - 5	30	15	100	74,90
1001317650	PHV7- BR DT (111-250 DT)	5 - 7	30	15	100	93,90
1001317850	PH10-BR DT (113-250 DT)	4 - 10	60	15	100	112,80



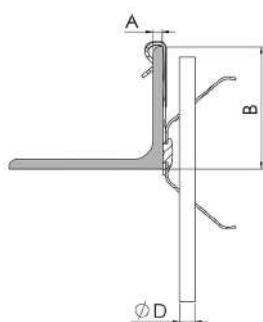
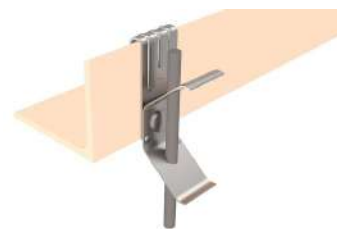
PHV-ICA



Cód.	Ref.	A mm.	B mm.	M	Kg.		€/100
ACABADO NEGRO / BLACK FINISHING							
10013109	PHV5-ICA6 (110-210)	1,5 - 5	30	M6	70	100	94,60
10013110	PHV5-ICA8 (110-211)	1,5 - 5	30	M8	70	100	99,20
10013111	PHV5-ICA10 (110-212)	1,5 - 5	30	M10	70	100	99,20
10013123	PHV7-ICA6 (111-210)	5 - 7	30	M6	70	100	99,20
10013124	PHV7-ICA8 (111-211)	5 - 7	30	M8	70	100	99,20
10013125	PHV7-ICA10 (111-212)	5 - 7	30	M10	70	100	99,20
10013151	PHV10-ICA6 (113-210)	4 - 10	60	M6	70	100	134,80
10013152	PHV10-ICA8 (113-211)	4 - 10	60	M8	70	100	134,80
10013153	PHV10-ICA10 (113-212)	4 - 10	60	M10	70	100	134,80
ACABADO SINARD GRIS / GREY SINARD FINISHING							
1001310950	PHV5-ICA6 DT (110-210 DT)	1,5 - 5	30	M6	70	100	122,90
1001311050	PHV5-ICA8 DT (110-211 DT)	1,5 - 5	30	M8	70	100	128,90
1001311150	PHV5-ICA10 DT (110-212 DT)	1,5 - 5	30	M10	70	100	128,90
1001312350	PHV7-ICA6 DT (111-210 DT)	5 - 7	30	M6	70	100	128,90
1001312450	PHV7-ICA8 DT (111-211 DT)	5 - 7	30	M8	70	100	128,90
1001312550	PHV7-ICA10 DT (111-212 DT)	5 - 7	30	M10	70	100	128,90
1001315150	PHV10-ICA6 DT (113-210 DT)	4 - 10	60	M6	70	100	175,20
1001315250	PHV10-ICA8 DT (113-211 DT)	4 - 10	60	M8	70	100	175,20
1001315350	PHV10-ICA10 DT (113-212 DT)	4 - 10	60	M10	70	100	175,20

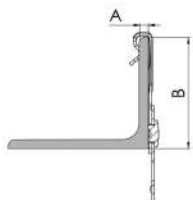


PHV-TR

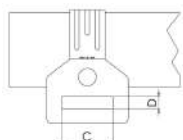


Cód.	Ref.	A mm.	B mm.	Ø D mm.	Kg.	€ /100
ACABADO NEGRO / BLACK FINISHING						
10013112	PHV5-TR4 (110-220)	1,5 - 5	30	4	60 100	72,50
10013113	PHV5-TR6 (110-221)	1,5 - 5	30	6	60 100	72,50
10013126	PHV7-TR4 (111-220)	5 - 7	30	4	60 100	72,50
10013127	PHV7-TR6 (111-221)	5 - 7	30	6	60 100	72,50
10013154	PHV10-TR4 (113-220)	4 - 10	60	4	60 100	109,90
10013155	PHV10-TR6 (113-221)	4 - 10	60	6	60 100	109,90
ACABADO SINARD GRIS / GREY SINARD FINISHING						
1001311250	PHV5-TR4 DT (110-220 DT)	1,5 - 5	30	4	60 100	94,20
1001311350	PHV5-TR6 DT (110-221 DT)	1,5 - 5	30	6	60 100	94,20
1001312650	PHV7-TR4 DT (111-220 DT)	5 - 7	30	4	60 100	94,20
1001312750	PHV7-TR6 DT (111-221 DT)	5 - 7	30	6	60 100	94,20
1001315450	PHV10-TR4 DT (113-220 DT)	4 - 10	60	4	60 100	143,10
1001315550	PHV10-TR6 DT (113-221 DT)	4 - 10	60	6	60 100	143,10

PHV-SH

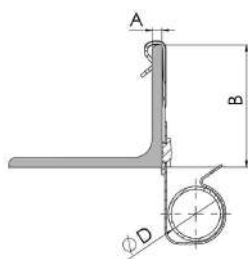



Cód.	Ref.	A mm.	B mm.	CxD	Kg.	€ /100
ACABADO SINARD GRIS / GREY SINARD FINISHING						
1001311450	PHV5-SH DT (110-230 DT)	1,5 - 5	30	28 x 6,5	45 100	76,40
1001312850	PHV7-SH DT (111-230 DT)	5 - 7	30	28 x 6,5	45 100	76,40
1001315650	PHV10-SH DT (113-230 DT)	4 - 10	60	28 x 6,5	45 100	125,00





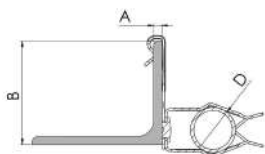
PHV-SC



Cód.	Ref.	A mm.	B mm.	ØD mm.		€/100
ACABADO SINARD GRIS / GREY SINARD FINISHING						
1001311550	PHV5-SC14 DT (110-310.1 DT)	1,5-5	30	12-14	100	86,10
1001311650	PHV5-SC18 DT (110-312.1 DT)	1,5-5	30	15-18	100	92,40
1001311750	PHV5-SC24 DT (110-314.1 DT)	1,5-5	30	19-24	100	97,40
1001311850	PHV5-SC30 DT (110-316.1 DT)	1,5-5	30	25-30	100	98,60
1001311950	PHV5-SC35 DT (110-317.1 DT)	1,5-5	30	31-35	100	106,20
1001312050	PHV5-SC40 DT (110-318.1 DT)	1,5-5	30	36-40	100	116,10
1001312150	PHV5-SC45 DT (110-319.1 DT)	1,5-5	30	41-45	100	124,40
1001312250	PHV5-SC50 DT (110-320.1 DT)	1,5-5	30	46-50	100	128,60
1001312950	PHV7-SC14 DT (111-310.1 DT)	5-7	30	12-14	100	119,00
1001313050	PHV7-SC18 DT (111-312.1 DT)	5-7	30	15-18	100	120,00
1001313150	PHV7-SC24 DT (111-314.1 DT)	5-7	30	19-24	100	122,00
1001313250	PHV7-SC30 DT (111-316.1 DT)	5-7	30	25-30	100	122,80
1001313350	PHV7-SC35 DT (111-317.1 DT)	5-7	30	31-35	100	127,10
1001313450	PHV7-SC40 DT (111-318.1 DT)	5-7	30	36-40	100	142,10
1001313550	PHV7-SC45 DT (111-319.1 DT)	5-7	30	41-45	100	144,20
1001313650	PHV7-SC50 DT (111-320.1 DT)	5-7	30	46-50	100	148,60
1001315750	PHV10-SC14 DT (113-310.1 DT)	4-10	60	12-14	100	134,60
1001315850	PHV10-SC18 DT (113-312.1 DT)	4-10	60	15-18	100	147,80
1001315950	PHV10-SC24 DT (113-314.1 DT)	4-10	60	19-24	100	153,20
1001316050	PHV10-SC30 DT (113-316.1 DT)	4-10	60	25-30	100	157,10
1001316150	PHV10-SC35 DT (113-317.1 DT)	4-10	60	31-35	100	161,80
1001316250	PHV10-SC40 DT (113-318.1 DT)	4-10	60	36-40	100	175,90
1001316350	PHV10-SC45 DT (113-319.1 DT)	4-10	60	41-45	100	179,90
1001316450	PHV10-SC50 DT (113-320.1 DT)	4-10	60	46-50	100	184,20

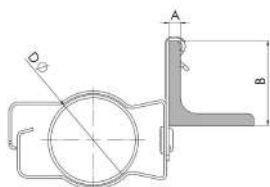


PHV-IC



Cód.	Ref.	A mm.	B mm.	∅ D mm.	Kg.		€/100
ACABADO SINARD GRIS / GREY SINARD FINISHING							
1001356450	PHV5-IC22 DT (110-280 DT)	1,5 - 5	30	18 - 22	7	100	104,50
1001356550	PHV5-IC30 DT (110-281 DT)	1,5 - 5	30	22 - 30	7	100	109,90
1001356650	PHV5-IC35 DT (110-282 DT)	1,5 - 5	30	30 - 35	7	100	116,10
1001356750	PHV7-IC22 DT (111-280 DT)	5 - 7	30	18 - 22	7	100	104,50
1001356850	PHV7-IC30 DT (111-281 DT)	5 - 7	30	22 - 30	7	100	109,90
1001356950	PHV7-IC35 DT (111-282 DT)	5 - 7	30	30 - 35	7	100	116,10
1001357350	PHV10-IC22 DT (113-280 DT)	4 - 10	60	18 - 22	7	100	158,40
1001357450	PHV10-IC30 DT (113-281 DT)	4 - 10	60	22 - 30	7	100	163,70
1001357550	PHV10-IC35 DT (113-282 DT)	4 - 10	60	30 - 35	7	100	170,10

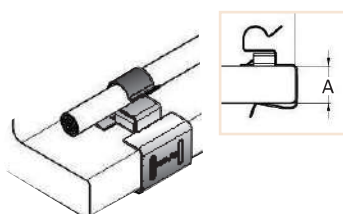
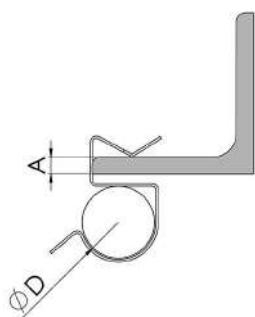
PHV-ICC




Cód.	Ref.	A mm.	B mm.	∅ D mm.	Kg.		€/100
ACABADO SINARD GRIS / GREY SINARD FINISHING							
1001332550	PHV5-ICC25 DT	1,5 - 5	30	20 - 25	7	100	108,10
1001332650	PHV5-ICC32 DT	1,5 - 5	30	26 - 32	7	100	119,50
1001332750	PHV5-ICC40 DT	1,5 - 5	30	33 - 40	7	100	123,60



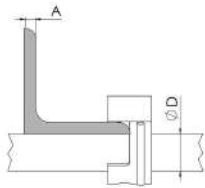
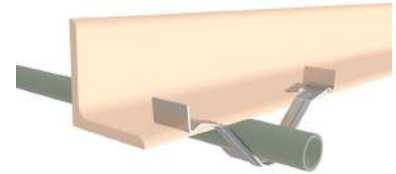
CD



Cód.	Ref.	Ø D mm.	A mm.		€/100
ACABADO NEGRO / BLACK FINISHING					
10013687	CD 4 - 6 (302)	4 - 6	1 - 4	100	12,80
10013688	CD 7'5 - 6 (303)	4 - 6	4 - 7'5	100	12,80
10013689	CD 12 - 6 (303.2)	4 - 6	7'5 - 12	100	12,80
10013690	CD 4-7 (304)	6 - 7	1 - 4	100	12,80
10013691	CD 7'5-7 (305)	6 - 7	4 - 7,5	100	12,80
10013692	CD 12-7 (305.2)	6 - 7	7,5 - 12	100	12,80
10013027	CD 4-9 (306)	8 - 9	1 - 4	100	13,80
10013028	CD 7'5-9 (307)	8 - 9	4 - 7,5	100	13,80
10013258	CD 12-9 (307.2)	8 - 9	7,5 - 12	100	13,80
10013029	CD 4-11 (308)	10 - 11	1 - 4	100	16,10
10013030	CD 7'5-11 (309)	10 - 11	4 - 7,5	100	16,10
10013259	CD 12-11 (309.2)	10 - 11	7,5 - 12	100	16,10
10013031	CD 4-14 (310)	12 - 14	1 - 4	100	19,40
10013033	CD 7'5-14 (311)	12 - 14	4 - 7,5	100	19,40
10013260	CD 12-14 (311.2)	12 - 14	7,5 - 12	100	19,40
10013034	CD 4-18 (312)	15 - 18	1 - 4	100	23,40
10013036	CD 7'5-18 (313)	15 - 18	4 - 7,5	100	23,40
10013261	CD 12-18 (313.2)	15 - 18	7,5 - 12	100	23,40
10013037	CD 4-24 (314)	19 - 24	1 - 4	100	26,90
10013039	CD 7'5-24 (315)	19 - 24	4 - 7,5	100	26,90
10013262	CD 12-24 (315.2)	19 - 24	7,5 - 12	100	26,90
10013040	CD 4-30 (316)	25 - 30	1 - 4	100	31,60
10013042	CD 7'5-30 (317)	25 - 30	4 - 7,5	100	31,60
10013263	CD 12-30 (317.2)	25 - 30	7,5 - 12	100	31,60
ACABADO SINARD GRIS / GREY SINARD FINISHING					
1001368750	CD 4 - 6 DT (302 DT)	4 - 6	1 - 4	100	16,20
1001368850	CD 7'5 - 6 DT (303 DT)	4 - 6	4 - 7'5	100	16,20
1001368950	CD 12 - 6 DT (303.2 DT)	4 - 6	7'5 - 12	100	16,20
1001369050	CD 4-7 DT (304 DT)	6 - 7	1 - 4	100	16,20
1001369150	CD 7'5-7 DT (305 DT)	6 - 7	4 - 7,5	100	16,20
1001369250	CD 12-7 DT (305.2 DT)	6 - 7	7,5 - 12	100	16,20
1001302750	CD 4-9 DT (306 DT)	8 - 9	1 - 4	100	17,90
1001302850	CD 7'5-9 DT (307 DT)	8 - 9	4 - 7,5	100	17,90
1001325850	CD 12-9 DT (307.2 DT)	8 - 9	7,5 - 12	100	17,90
1001302950	CD 4-11 DT (308 DT)	10 - 11	1 - 4	100	21,10
1001303050	CD 7'5-11 DT (309 DT)	10 - 11	4 - 7,5	100	21,10
1001325950	CD 12-11 DT (309.2 DT)	10 - 11	7,5 - 12	100	21,10
1001303150	CD 4-14 DT (310 DT)	12 - 14	1 - 4	100	25,20
1001303350	CD 7'5-14 DT (311 DT)	12 - 14	4 - 7,5	100	25,20
1001326050	CD 12-14 DT (311.2 DT)	12 - 14	7,5 - 12	100	25,20
1001303450	CD 4-18 DT (312 DT)	15 - 18	1 - 4	100	30,20
1001303650	CD 7'5-18 DT (313 DT)	15 - 18	4 - 7,5	100	30,20
1001326150	CD 12-18 DT (313.2 DT)	15 - 18	7,5 - 12	100	30,20
1001303750	CD 4-24 DT (314 DT)	19 - 24	1 - 4	100	34,70
1001303950	CD 7'5-24 DT (315 DT)	19 - 24	4 - 7,5	100	34,70
1001326250	CD 12-24 DT (315.2 DT)	19 - 24	7,5 - 12	100	34,70
1001304050	CD 4-30 DT (316 DT)	25 - 30	1 - 4	100	41,30
1001304250	CD 7'5-30 DT (317 DT)	25 - 30	4 - 7,5	100	41,30
1001326350	CD 12-30 DT (317.2 DT)	25 - 30	7,5 - 12	100	41,30
ADAPTADOR / ADAPTATEUR / ADAPTER / ADAPTER					
1001369850	325 DT	-	12 - 15	100	51,00
1001369950	326 DT	-	16 - 20	100	51,00



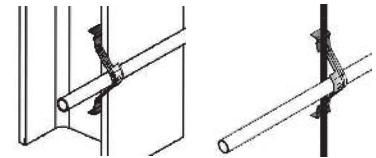
BTM



Cód.	Ref.	Ø D mm.	A mm.		€/100
ACABADO SINARD GRIS / GREY SINARD FINISHING					
1001364050	BTM 750	16 – 20	6 – 9	100	111,20
1001364150	BTM 1250	25 – 32	6 – 9	100	128,80

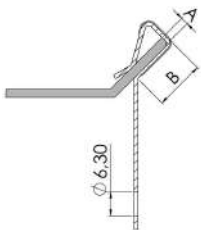
Consulte otras medidas
Other dimension under request

Otras aplicaciones:
Other applications:



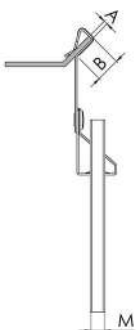
Disponible próximamente - Coming soon

PHZ



Cód.	Ref.	A mm.	B mm.	Kg.		€/100
ACABADO SINARD GRIS / GREY SINARD FINISHING						
1001317050	PHZ DT (120 DT)	1,5 - 5	20	45	100	38,20

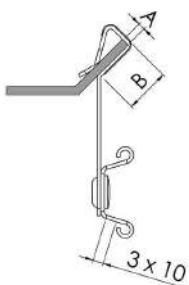
PHZ-ICA



Cód.	Ref.	A mm.	B mm.	CxD	Kg.		€/100
ACABADO SINARD GRIS / GREY SINARD FINISHING							
1001385050	PHZ-ICA6 DT (120-210 DT)	1,5 - 5	20	M6	45	100	153,90
1001385150	PHZ-ICA8 DT (120-211 DT)	1,5 - 5	20	M8	45	100	153,90
1001385250	PHZ-ICA10 DT (120-212 DT)	1,5 - 5	20	M10	45	100	153,90

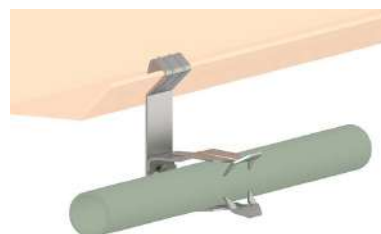
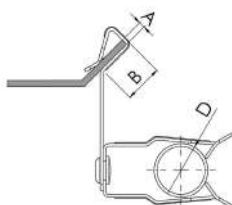


PHZ-BR



Cód.	Ref.	A mm.	B mm.	Kg.		€/100
ACABADO SINARD GRIS / GREY SINARD FINISHING						
1001317950	PHZ-BR DT (120-250 DT)	1,5 - 5	20	15	100	74,90

PHZ-IC



Cód.	Ref.	A mm.	B mm.	∅ D mm.	Kg.		€/100
ACABADO SINARD GRIS / GREY SINARD FINISHING							
1001357650	PHZ-IC22DT (120-280 DT)	1,5-5	20	18-22	7	100	101,80
1001357750	PHZ-IC30DT (120-281 DT)	1,5-5	20	22-30	7	100	107,50
1001357850	PHZ-IC35DT (120-282 DT)	1,5-5	20	30-35	7	100	113,30

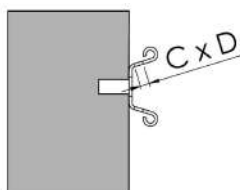
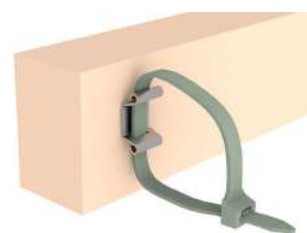


ICA



Cód.	Ref.	M	Kg.		€/100
ACABADO NEGRO / BLACK FINISHING					
10013020	ICA6 (210)	M6	70	100	54,60
10013021	ICA8 (211)	M8	70	100	54,60
10013022	ICA10 (212)	M10	70	100	54,60
ACABADO SINARD GRIS / GREY SINARD FINISHING					
1001302050	ICA6 DT (210 DT)	M6	70	100	71,10
1001302150	ICA8 DT (211 DT)	M8	70	100	71,10
1001302250	ICA10 DT (212 DT)	M10	70	100	71,10

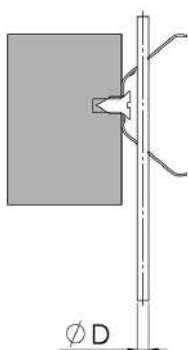
BR



Cód.	Ref.	CxD	Kg.		€/100
ACABADO SINARD GRIS / GREY SINARD FINISHING					
1001301850	BR DT (250 DT)	3 x 10	15	100	27,60

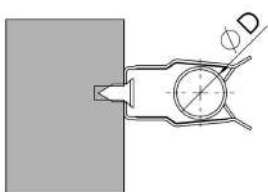
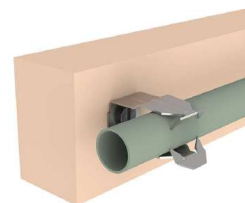


TR



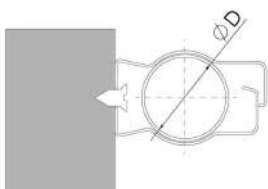
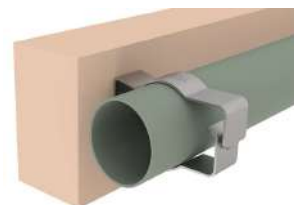
Cód.	Ref.	Ø D mm.	Kg.		€/100
ACABADO NEGRO / BLACK FINISHING					
10013023	TR4 (220)	4	60	100	29,80
10013024	TR6 (221)	6	60	100	29,80
ACABADO SINARD GRIS / GREY SINARD FINISHING					
1001302350	TR4 DT (220 DT)	4	60	100	38,80
1001302450	TR6 DT (221 DT)	6	60	100	38,80

IC



Cód.	Ref.	Ø D mm.	Kg.		€/100
ACABADO SINARD GRIS / GREY SINARD FINISHING					
1001354050	IC22 DT (280 DT)	18 - 22	7	100	44,70
1001354150	IC30 DT (281 DT)	22 - 30	7	100	49,70
1001354250	IC35 DT (282 DT)	30 - 35	7	100	56,10

ICC



Cód.	Ref.	Ø D mm.	Kg.		€/100
ACABADO SINARD GRIS / GREY SINARD FINISHING					
1001330150	ICC 25 DT	20 - 25	7	100	57,70
1001330250	ICC 32 DT	26 - 32	7	100	69,00
1001330350	ICC 40 DT	33 - 40	7	100	82,40

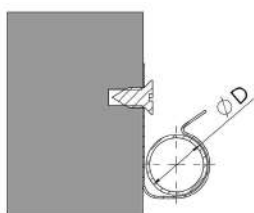
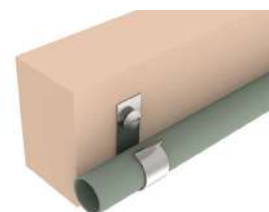


Elementos de fijación rápida
Elements de fixation rapide

Quick attachment devices
Schnellen befestigungselemente

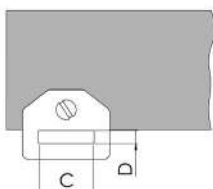


SC



Cód.	Ref.	∅ D mm.		€/100
ACABADO SINARD GRIS / GREY SINARD FINISHING				
1001303250	SC 14 DT (310.1 DT)	12 - 14	100	29,20
1001303550	SC 18 DT (312.1 DT)	15 - 18	100	34,80
1001303850	SC 24 DT (314.1 DT)	19 - 24	100	40,20
1001304150	SC 30 DT (316.1 DT)	25 - 30	100	43,90
1001304350	SC 35 DT (317.1 DT)	31 - 35	100	48,40
1001304450	SC 40 DT (318.1 DT)	36 - 40	100	61,60
1001304550	SC 45 DT (319.1 DT)	41 - 45	100	65,50
1001304650	SC 50 DT (320.1 DT)	46 - 50	100	69,70

SH

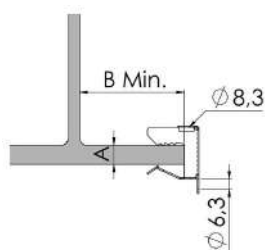
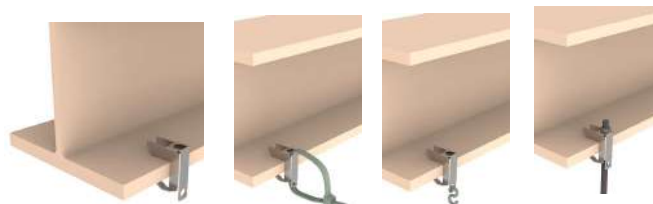


Cód.	Ref.	CxD	Kg.		€/100
ACABADO SINARD GRIS / GREY SINARD FINISHING					
1001302550	SH DT (230 DT)	28 x 6,5	45	100	27,20



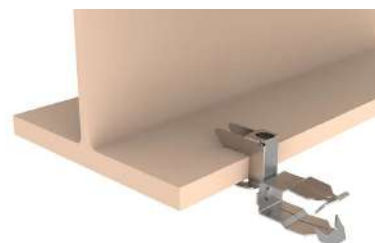
FIJACIÓN UNIVERSAL - FIXATION UNIVERSELLE
UNIVERSAL FIXING - UNIVERSELLE BEFESTIGUNG

UF



Cód.	Ref.	A mm.	B mm.	Kg.		€/100
ACABADO SINARD GRIS / GREY SINARD FINISHING						
1001380050	UF 8 DT (160 DT)	3 - 8	25	120	100	60,20
1001380150	UF 14 DT (161 DT)	8 - 14	25	120	100	72,90
1001380250	UF 20 DT (162 DT)	14 - 20	25	120	100	90,30

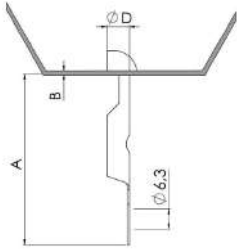
UF-IC



Cód.	Ref.	A mm.	B mm.	Ø D mm.		€/100
ACABADO SINARD GRIS / GREY SINARD FINISHING						
1001380350	UF8-IC22 DT (160-280 DT)	3 - 8	25	18 - 22	100	124,70
1001380450	UF8-IC30 DT (160-281 DT)	3 - 8	25	22 - 30	100	131,80
1001380550	UF8-IC35 DT (160-282 DT)	3 - 8	25	30 - 35	100	138,80
1001380650	UF14-IC22 DT (161-280 DT)	8 - 14	25	18 - 22	100	137,60
1001380750	UF14-IC30 DT (161-281 DT)	8 - 14	25	22 - 30	100	144,80
1001380850	UF14-IC35 DT (161-282 DT)	8 - 14	25	30 - 35	100	164,00
1001380950	UF20-IC22 DT (162-280 DT)	14 - 20	25	18 - 22	50	154,40
1001381050	UF20-IC30 DT (162-281 DT)	14 - 20	25	22 - 30	50	163,20
1001381150	UF20-IC35 DT (162-282 DT)	14 - 20	25	30 - 35	50	171,60

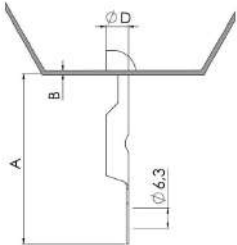


RD



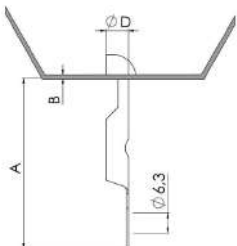
Cód.	Ref.	B mm.	Ø D	Kg. ⁽¹⁾		€/100
ACABADO SINARD GRIS / GREY SINARD FINISHING						
1001368050	RD DT (150 DT)	0'8 - 3	7 - 8	-	100	31,30

RD-ICA



Cód.	Ref.	B mm.	Ø D	M	Kg. ⁽¹⁾		€/100
ACABADO SINARD GRIS / GREY SINARD FINISHING							
1001368150	RD-ICA6 DT (150-210 DT)	0'8 - 3	7 - 8	M6	-	100	96,20
1001368250	RD-ICA8 DT (150-211 DT)	0'8 - 3	7 - 8	M8	-	100	96,20
1001368350	RD-ICA10 DT (150-212 DT)	0'8 - 3	7 - 8	M10	-	100	96,20

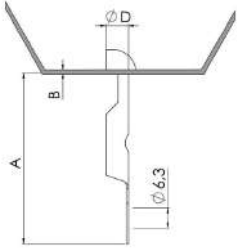
RD-SH



Cód.	Ref.	B mm.	Ø D	CxD	Kg. ⁽¹⁾		€/100
ACABADO SINARD GRIS / GREY SINARD FINISHING							
1001368450	RD-SH DT (150-230 DT)	0'8 - 3	7 - 8	28 x 6'5	-	100	58,20



RD-TR

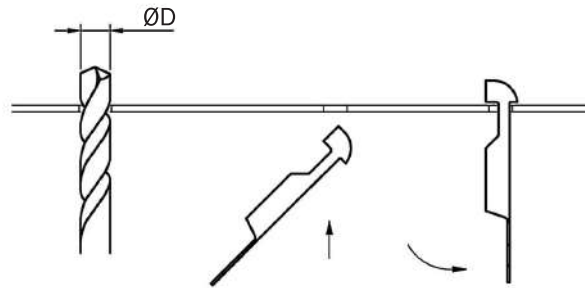


Cód.	Ref.	B mm.	ØD	Ø varilla		Kg. ⁽¹⁾	€ /100
				Ø rod			
ACABADO SINARD GRIS / GREY SINARD FINISHING							
1001368550	RD-TR4 DT (150-220 DT)	0'8 - 3	7-8	4	-	100	71,40
1001368650	RD-TR6 DT (150-221 DT)	0'8 - 3	7-8	6	-	100	71,40

(1) Cargas según el espesor de la base de anclaje.

(1) Loads according to the thickness of the sheet.

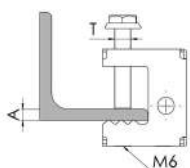
MONTAJE - MONTAGE - INSTALLATION - MONTAGE:





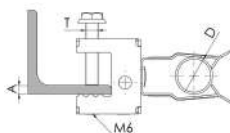
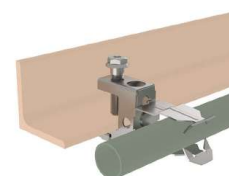
MORDAZAS - CRAMPONS - BEAM CLAMP - TRÄGERKLAMMER

SB



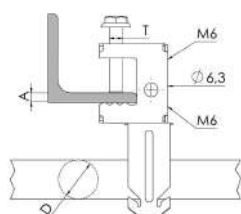
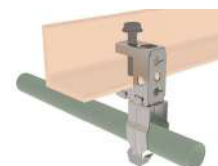
Cód.	Ref.	D	T	A mm.	Kg.		€/100
ACABADO SINARD GRIS / GREY SINARD FINISHING							
1001365050	SB17 11 DT (130 DT)	10'7	M6	<16	45	100	147,00

SB-IC H



Cód.	Ref.	T	A mm.	∅D mm.	Kg.		€/100
ACABADO SINARD GRIS / GREY SINARD FINISHING							
1001357950	SB17-IC22 H DT (131-280 H DT)	M6	<16	18 - 22	7	50	184,40
1001358050	SB17-IC30 H DT (131-281 H DT)	M6	<16	22 - 30	7	50	189,30
1001358150	SB17-IC35 H DT (131-282 H DT)	M6	<16	30 - 35	7	50	195,00

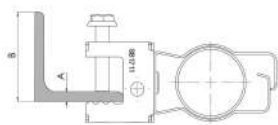
SB-IC V



Cód.	Ref.	T	A mm.	∅D mm.	Kg.		€/100
ACABADO SINARD GRIS / GREY SINARD FINISHING							
1001358250	SB17-IC22 V DT (131-280 V DT)	M6	<16	18 - 22	7	50	184,40
1001358350	SB17-IC30 V DT (131-281 V DT)	M6	<16	22 - 30	7	50	189,30
1001358450	SB17-IC35 V DT (131-282 V DT)	M6	<16	30 - 35	7	50	195,00

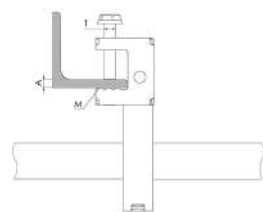
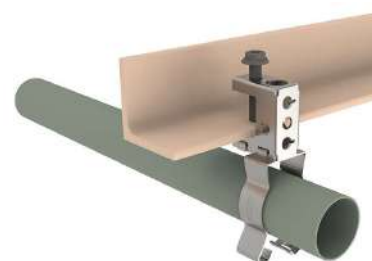


SB-ICC H



Cód.	Ref.	T	A mm.	∅ D mm.	Kg.		€/100
ACABADO SINARD GRIS / GREY SINARD FINISHING							
1001332850	SB17-ICC25 H DT	M6	<16	20-25	7	50	211,20
1001332950	SB17-ICC32 H DT	M6	<16	26-32	7	50	219,40
1001333050	SB17-ICC40 H DT	M6	<16	33-40	7	50	225,60

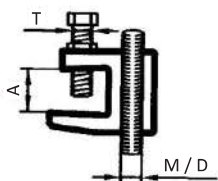
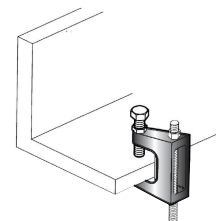
SB-ICC V



Cód.	Ref.	T	A mm.	∅ D mm.	Kg.		€/100
ACABADO SINARD GRIS / GREY SINARD FINISHING							
1001333150	SB17-ICC25 V DT	M6	<16	20-25	7	50	211,20
1001333250	SB17-ICC32 V DT	M6	<16	26-32	7	50	219,40
1001333350	SB17-ICC40 V DT	M6	<16	33-40	7	50	225,60

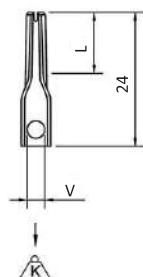
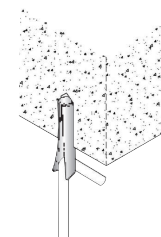


M-T



Cód.	Ref.	M / D	T	A mm.	Kg.		€/100
10013600	M6 T8	M6	M8	<18	120	50	397,10
10013601	D7 T8	D7	M8	<18	120	50	397,10
10013602	M6 T10	M6	M10	<23	250	50	432,60
10013603	D7 T10	D7	M10	<23	250	50	432,60
10013180	M8 T8	M8	M8	<18	120	50	397,10
10013181	D9 T8	D9	M8	<18	120	50	397,10
10013182	M8 T10	M8	M10	<23	250	50	432,60
10013183	D9 T10	D9	M10	<23	250	50	432,60
10013184	M10 T10	M10	M10	<20	250	50	432,60
10013185	D11 T10	D11	M10	<20	250	50	432,60
10013186	M12 T10	M12	M10	<26	350	50	581,60
10013187	D13 T10	D13	M10	<26	350	50	581,60
10013604	M16 T12	M16	M12	<28	550	50	1.162,80
10013605	D17 T12	D17	M12	<28	550	50	1.162,80

270

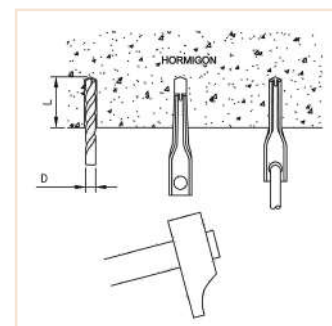


Cód.	Ref.	V mm.	Prof. min. anclaje "L" mm.	∅ D mm.	Kg.		€/100
10013530	270	4	20	8	40	100	18,80

ATENCIÓN:

Usar sólo en **hormigón no fisurado**.

Use only on **non-cracked concrete**.





SUSPENSIÓN CON CABLE - SUSPENSION AVEC CÂBLE
SUSPENSION WITH CABLE - FEDERUNGS MIT KABEL

MX2



Cód.	Ref.	∅ Cable mm.	Longitud cable mm.	Kg.	Contenido	
					bolsa	€/bolsa ⁽¹⁾
10013701	MX2 L - 1'5 - 2	1'5	2	50	10	71,00
10013702	MX2 L - 1'5 - 3	1'5	3	50	10	74,00
10013703	MX2 L - 1'5 - 5	1'5	5	50	10	80,00
10013704	MX2 L - 2'5 - 2	2'5	2	100	10	85,00
10013705	MX2 L - 2'5 - 3	2'5	3	100	10	90,00
10013706	MX2 L - 2'5 - 5	2'5	5	100	10	99,00



Cód.	Ref.	∅ Cable mm.	Longitud cable mm.	Kg.	Contenido	
					bolsa	€/bolsa ⁽¹⁾
10013707	MX2 V - 1'5 - 2	1'5	2	50	10	81,00
10013708	MX2 V - 1'5 - 3	1'5	3	50	10	84,00
10013709	MX2 V - 1'5 - 5	1'5	5	50	10	89,00
10013710	MX2 V - 2'5 - 2	2'5	2	100	10	103,00
10013711	MX2 V - 2'5 - 3	2'5	3	100	10	106,00
10013712	MX2 V - 2'5 - 5	2'5	5	100	10	115,00



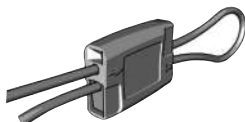
Cód.	Ref.	∅ Cable mm.	Longitud cable mm.	M	Kg.	Contenido	
						bolsa	€/bolsa ⁽¹⁾
10013713	MX2 R - 1'5 - 2	1'5	2	M6	50	10	97,00
10013714	MX2 R - 1'5 - 3	1'5	3	M6	50	10	102,00
10013715	MX2 R - 1'5 - 5	1'5	5	M6	50	10	107,00
10013716	MX2 R - 2'5 - 2	2'5	2	M6	100	10	114,00
10013717	MX2 R - 2'5 - 3	2'5	3	M6	100	10	121,00
10013718	MX2 R - 2'5 - 5	2'5	5	M6	100	10	130,00


⁽¹⁾ Cada bolsa contiene 10 conjuntos (alambres + tensores) y una llave destensadora.

Cargas especificadas en carga vertical, con un coeficiente de seguridad 3:1, con los cables suministrados en el conjunto. Otras longitudes de cable, disponibles bajo demanda.




TENSOR



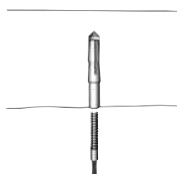
Cód.	Ref.	∅ Cable mm.	Longitud cable m.	Kg.		€/100
10013719	MX2 T	-	-	-	100	258,00

LLAVE DESTENSADORA



Cód.	Ref.	∅ Cable mm.	Longitud cable m.	Kg.		€/100
10013720	MX2 LL	-	-	-	10	150,00

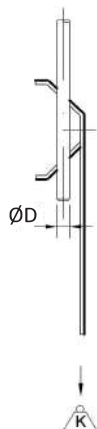
MONTAJE - MONTAGE - INSTALLATION - MONTAGE:





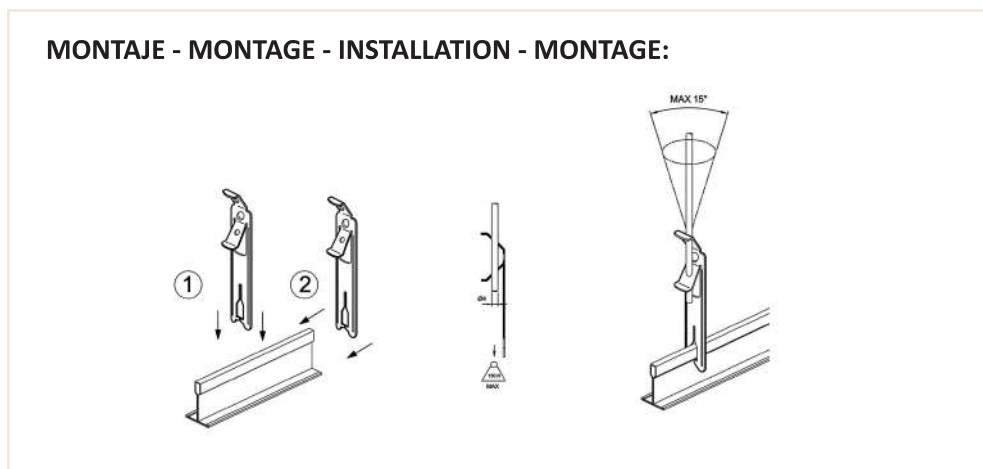
FIJACIONES PARA PERFILES DE FALSOS TECHOS
FIXATION POUR FAUX-PLAFONDS - FIXATION FOR CEILINGS
FIXIERUNG FÜR ZWISCHENDECKENPROFILE

260

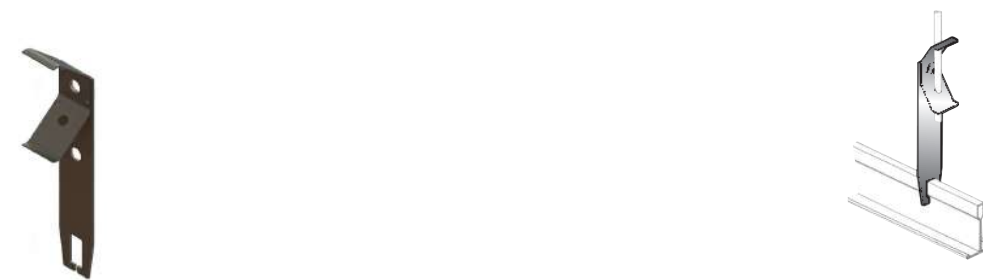


Cód.	Ref.	Ø D mm.	Kg.		€/100
ACABADO SINARD GRIS / GREY SINARD FINISHING					
1001323050	260 DT	4	15	100	53,50

MONTAJE - MONTAGE - INSTALLATION - MONTAGE:



1122



Cód.	Ref.	Ø D mm.	Kg.		€/100
ACABADO NEGRO / BLACK FINISHING					
10013256	1122-220	4	45	100	103,90
10013257	1122-221	6	45	100	103,90

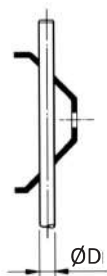
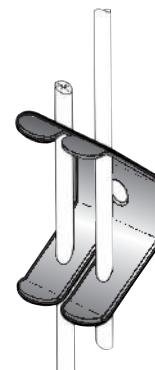



Elementos de fijación rápida
Elements de fixation rapide

Quick attachment devices
Schnellen befestigungselemente

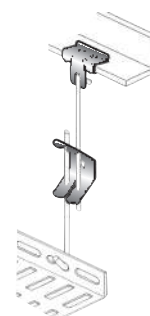
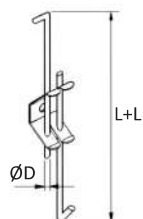
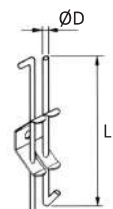



240



Cód.	Ref.	Ø D mm.	Kg.		€/100
ACABADO SINARD GRIS / GREY SINARD FINISHING					
1001326450	240 DT	4	30	100	31,30
1001326550	241 DT	6	30	100	31,30

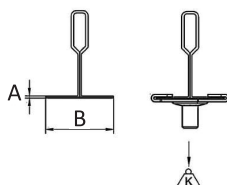
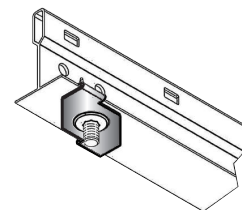
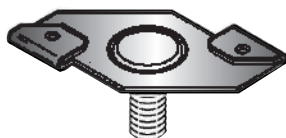
240 - 600



Cód.	Ref.	Ø D mm.	L mm.	L+L mm.	Kg.		€/100
10013451	240 DT - 640	4	180	150-300	30	100	51,00
10013454	240 DT - 643	4	330	300-600	30	100	57,30
10013460	240 DT - 649	4	630	600-1200	30	100	89,10
10013464	240 DT - 653	4	830	800-1500	30	100	114,50
10013468	240 DT - 657	4	1030	1000-2000	30	100	140,10

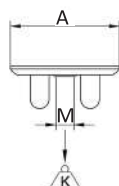
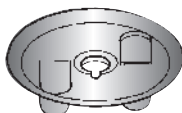


ACC



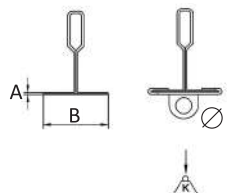
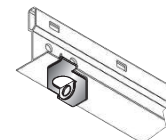
Cód.	Ref.	B mm.	A mm.	M6xL	Kg.		€/100
ACABADO / FINITION / FINISHING / ENDVERARBEITUNG: CINCADO							
1001367150	ACC25 M6x9 ZN (140 T-9 ZN)	25	1'5	M6 x9	20	100	72,10
1001367250	ACC25 M6x16 ZN (140 T-16 ZN)	25	1'5	M6 x 16	20	100	81,20
1001367350	ACC25 M6x25 ZN (140 T-25 ZN)	25	1'5	M6 x 25	20	100	100,00
LACADO BLANCO / LAQUÉ BLANC / WHITE LACQUER / WEISSLACKIERT (1)							
1001367190	ACC25 M6x9 L (140 T-9 L)	25	1'5	M6 x9	20	100	108,90
1001367290	ACC25 M6x16 L (140 T-16 L)	25	1'5	M6 x 16	20	100	113,00
1001367390	ACC25 M6x25 L (140 T-25 L)	25	1'5	M6 x 25	20	100	124,90

ACN



Cód.	Ref.	M	Kg.		€/100
ACABADO / FINITION / FINISHING / ENDVERARBEITUNG: CINCADO					
1001367450	ACN ZN (290 ZN)	M6	20	100	40,50

ACT



Cód.	Ref.	B mm.	A mm.	∅	Kg.		€/100
ACABADO / FINITION / FINISHING / ENDVERARBEITUNG: CINCADO							
1001367550	ACT ZN (141 ZN)	25	1'5	5'4	20	100	39,00
LACADO BLANCO / LAQUÉ BLANC / WHITE LACQUER / WEISSLACKIERT (1)							
1001367590	ACT L (141 L)	25	1'5	5'4	20	100	97,60

(1) Disponible en otros colores / (1) Disponible en autres couleurs

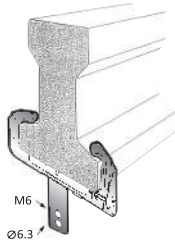
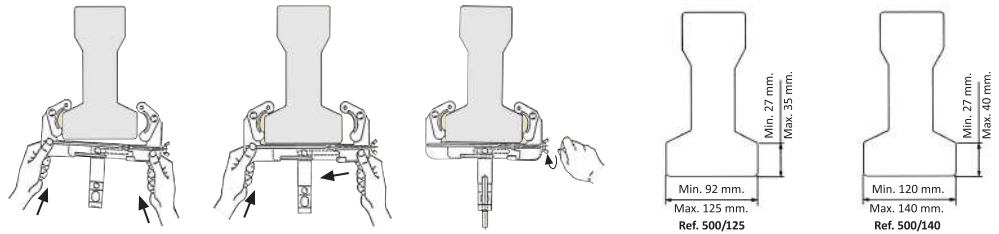
(1) Available in other colors / (1) In anderen Farben erhältlich in anderen Farben erhältlich



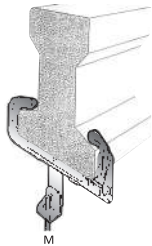
**SOPORTE PARA VIGAS DE HORMIGÓN - SUPPORT POUR POUTRE EN BETÓN
CONCRETE BEAM SUPPORT - STÜTZE FÜR BETONBALEN**

500

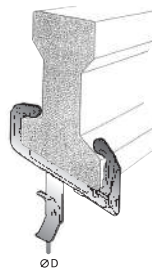
MONTAJE - MONTAGE - INSTALLATION - MONTAGE:



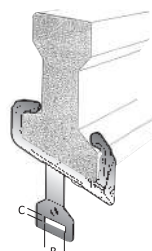
Cód.	Ref.	Kg.		€/100
10013267	500/125	90	50	543,50
10013282	500/140	90	50	543,50



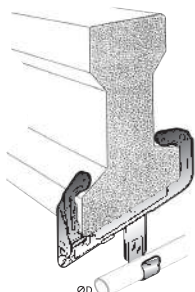
Cód.	Ref.	M	Kg.		€/100
10013268	500-210/125	M6	70	50	685,00
10013283	500-210/140	M6	70	50	685,00
10013269	500-211/125	M8	70	50	685,00
10013284	500-211/140	M8	70	50	685,00
10013270	500-212/125	M10	70	50	685,00
10013285	500-212/140	M10	70	50	685,00



Cód.	Ref.	Ø D mm.	Kg.		€/100
10013271	500-220/125	4	60	50	655,20
10013286	500-220/140	4	60	50	655,20
10013272	500-221/125	6	60	50	655,20
10013287	500-221/140	6	60	50	655,20

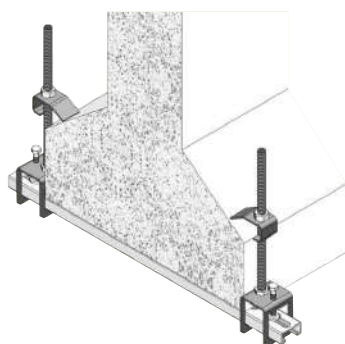


Cód.	Ref.	BxC	Kg.		€/100
10013273	500-230/125	28 x 6'5	45	50	640,30
10013288	500-230/140	28 x 6'5	45	50	640,30

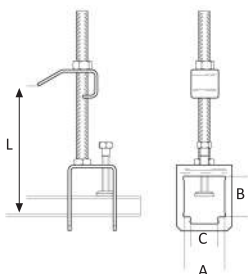


Cód.	Ref.	∅ D mm.		€/100
10013274	500-310.1/125	12-14	50	647,70
10013289	500-310.1/140	12-14	50	647,70
10013275	500-312.1/125	15-18	50	655,20
10013290	500-312.1/140	15-18	50	655,20
10013276	500-314.1/125	19-24	50	670,10
10013291	500-314.1/140	19-24	50	670,10
10013277	500-316.1/125	25-30	50	674,40
10013292	500-316.1/140	25-30	50	674,40
10013278	500-317.1/125	31-35	50	677,70
10013293	500-317.1/140	31-35	50	677,70
10013279	500-318.1/125	36-40	50	680,70
10013294	500-318.1/140	36-40	50	680,70
10013280	500-319.1/125	41-45	50	685,00
10013295	500-319.1/140	41-45	50	685,00
10013281	500-320.1/125	46-50	50	689,30
10013296	500-320.1/140	46-50	50	689,30

510 - 520



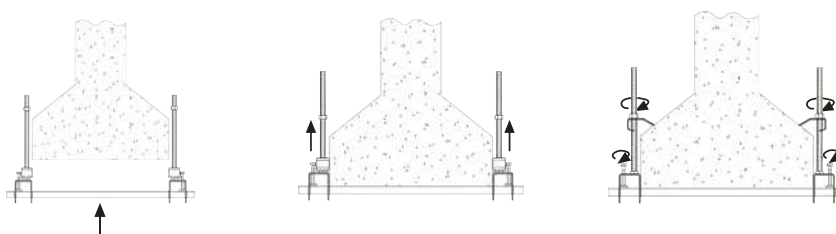
- Fácil y cómoda instalación
- Sin necesidad de taladrar la viga
- Alta capacidad de agarre
- Altura de vidar: de 30 a 160 mm.
- Se adapta a la mayoría de perfiles
- No incluye el perfil

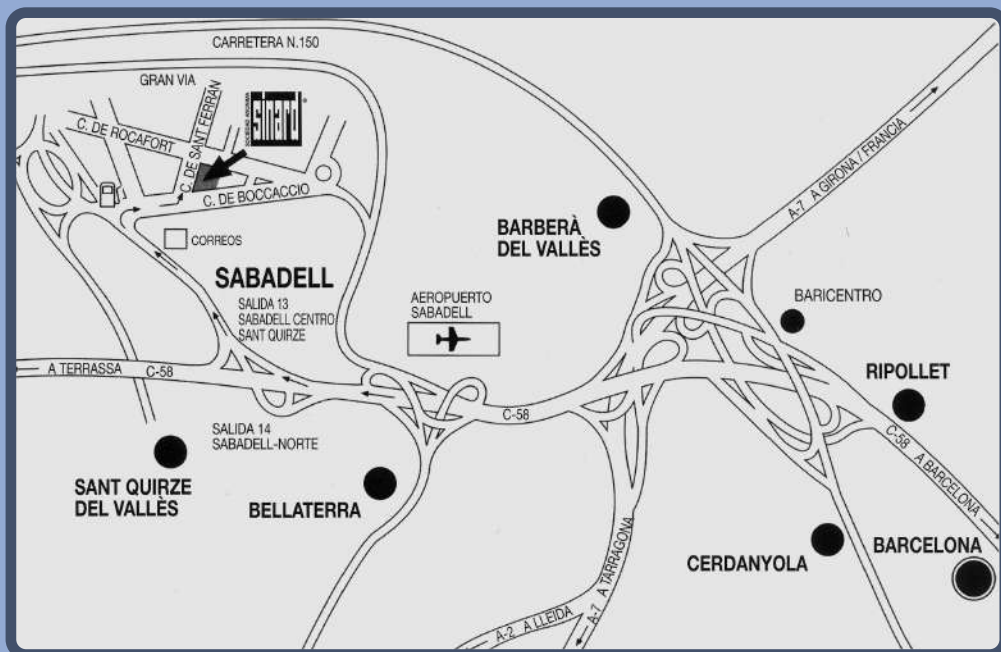


Cód.	Ref.	L mm. min.	(*) max.	AxB / C mm.	Kg.		€/100
10013480	510	30	150	43x23/28	75	20	1.975,00
10013481	520	30	150	43x43/28	75	20	1.975,00

(*) Consultar para otras longitudes / Other lengths on request.

MONTAJE - MONTAGE - INSTALLATION - MONTAGE:





Estampaciones en acero elástico con tratamiento térmico

Estampages en acier élastique avec traitement thermique

Heat treated spring steel stampings

Metallstanzarbeiten auf elastischem stahl mit thermischer behandlung

Rocafort, 66 - Apartado de correos 3224
08205 Sabadell
Tel. 93 710 47 00 - Fax. 93 710 47 12
comercial@sinard.es - Export: sinard@sinard.es
www.sinard.es

