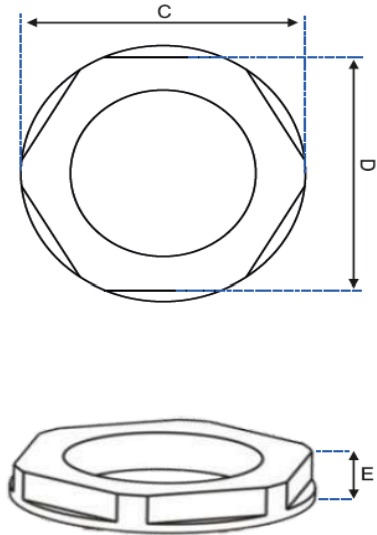


JSL – Material Eléctrico, S.A.

Product: Metric nuts

Reference: M12-P | M16-P | M20-P | M25-P | M32-P | M40-P | M50-P | M63-P



Ref.	Key	C	D	E
M12	15	16,5	15	5
M16	19	21	19	6
M20	24	27	24	6
M25	33	37,5	33	6
M32	42	47,5	42	7
M40	53	60	53	7
M50	60	68	60	8
M63	65	74	65	8

PRODUCT CHARACTERISTICS

Type of Material	Thermoplastic (PA6)	Color Available	BLK GREY WHT ORG RED CRM
Cable anchorage	Whit "cable anchorage"	Electrical properties	Electrical insulation
Anchorage	Type A	Chemical properties	Resistant to acid & alkaline solutions
IP w/ cable	NA		Resistance limited to solvents
IP w/ box	NA		UV Resistant
IK	NA	Others	Halogen free
Self-extinguishing	750 °C		
Class	M3		
Operating temperature	-20°C +90°C		

APPLICABLE STANDARDS

EN 62444 - Cable glands for electrical installations
 EN 60695 - Fire hazard testing. Glowing/hot-wire based test methods

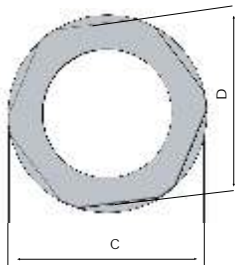


► Porcas PG

► Tuercas PG

► PG Nuts

► Ecrus PG



-5° C
+60° C

Material Termoplástico
Material Termoplastico
Thermoplastic Material
Materiel Termoplastique

Cores
Colores
Couleurs
Couleurs



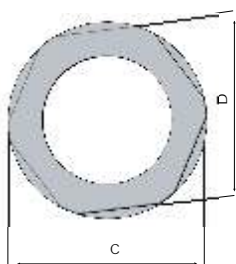
Ref.	Ø (mm)	C	D	E	
PG 7	19	21,0	19,0	5,0	50
PG 9	22	24,0	22,0	5,0	50
PG 11	24	26,0	24,0	5,0	50
PG 13,5	27	29,0	27,0	6,0	50
PG 16	30	33,0	30,0	6,0	50
PG 21	36	39,0	35,5	7,0	20
PG 29	46	50,0	45,5	7,0	20
PG 36	60	65,5	59,8	8,0	10
PG 48	70	78,0	70,0	8,0	5

► Porcas Métricas

► Tuercas Metricas

► Metric Nuts

► Ecrus Metricas



-20° C
+125° C

Material Termoplástico
Material Termoplastico
Thermoplastic Material
Materiel Termoplastique

Cores
Colores
Couleurs
Couleurs



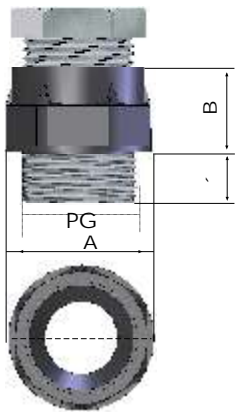
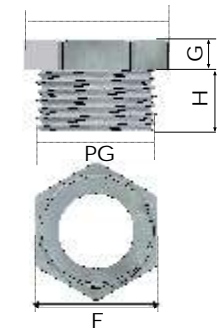
Ref.	Ø (mm)	C	D	E	
M 12	15	16,5	15,0	5,0	50
M 16	19	21,0	19,0	6,0	50
M 20	24	27,0	24,0	6,0	50
M 25	33	37,5	33,0	6,0	20
M 32	42	47,5	42,0	7,0	20
M 40	53	60,0	53,0	7,0	10
M 50	60	68,0	60,0	8,0	5
M 63	65	74,0	65,0	8,0	5

► Bucins PG

► Prensaestopas PG

► PG Cable Glands

► Presse-etoupes PG



-5° C
+60° C

Material Termoplástico
Material Termoplástico
Thermoplastic Material
Materiel Termoplastique

Cabos
Cables
Cables
Câbles

Cores
Colores
Couleurs
Couleurs



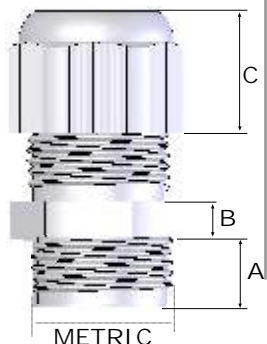
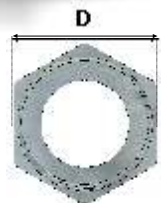
Ref.	Ø (mm)	A	B	B'	F	H	G	IP	IK	Ø Cab.	📦
PG 7	13 / 15	16,0	13,0	8,0	15,0	8,5	5,0	65	07	3,5 - 6	50
PG 9	16 / 19	20,5	13,5	8,0	18,0	8,5	5,5	65	07	4,5 - 7	50
PG 11	19 / 22	24,0	14,0	8,0	21,0	9,5	5,0	65	07	6 - 9	50
PG 13,5	21 / 24	26,0	15,5	9,0	24,0	10,5	5,0	65	07	9 - 12	50
PG 16	23 / 27	29,5	16,0	9,0	25,5	11,5	6,5	65	07	11 - 14	50
PG 21	30 / 33	35,5	19,0	11,0	34,5	12,5	7,0	65	07	14 - 18	20
PG 29	40 / 42	46,0	19,0	11,5	45,0	14,0	8,0	65	07	18 - 25	20
PG 36	50 / 53	57,0	24,0	12,5	55,0	17,5	8,0	65	07	25 - 32	10
PG 48	60 / 65	71,0	28,0	12,5	71,0	22,5	13,0	65	07	38 - 44	10

► Bucins Métricos

► Prensaestopas Metricas

► Metric Cable Glands

► Presse-etoupes Metricues



-20° C
+90° C

Material Termoplástico
Material Termoplástico
Thermoplastic Material
Materiel Termoplastique

Cabos
Cables
Cables
Câbles

Cores
Colores
Couleurs
Couleurs



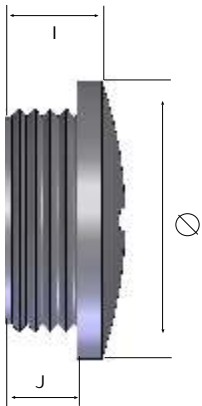
Ref.	Ø (mm)	A	B	C	D	IP	IK	Ø Cab.	📦
M 12	19 / 21	8,0	5,0	12,6	15,0	68	09	3 - 6,5	50
M 16	24 / 27	8,0	5,0	15,5	20,0	68	09	6 - 10	50
M 20	33 / 37,5	9,0	5,0	18,0	24,0	68	09	8 - 13	50
M 25	42 / 47,5	11,0	6,0	22,0	29,0	68	09	12 - 18	20
M 32	53 / 60	11,0	7,0	24,5	36,0	68	09	16 - 20	20
M 40	60 / 68	18,0	8,0	31,0	46,0	68	09	20 - 29	10
M 50	65 / 74	18,0	9,0	32,5	55,0	68	09	26 - 34	5
M 63		18,0	9,0	33,0	68,0	68	09	34 - 44	5

▶ Tampões PG

▶ Tapas PG

▶ PG Blind Nuts

▶ Bouchons PG



-5° C
+60° C
 Material Termoplástico
Material Termoplástico
Thermoplastic Material
Materiel Termoplastique
 Cores
Colores
Couleurs
Couleurs



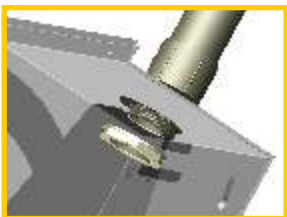
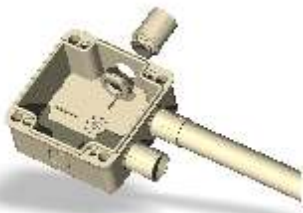
Ref.	(mm)	L	J	Ø	
PG 7	19	8,0	6,0	15,0	50
PG 9	22	9,0	6,0	19,0	50
PG 11	24	9,0	6,0	22,0	50
PG 13,5	27	9,5	6,0	25,0	50
PG 16	30	9,5	6,0	27,0	50
PG 21	36	11,0	8,0	33,0	20
PG 29	46	12,0	8,0	44,0	20
PG 36	60	15,0	10,0	55,0	10
PG 48	70	16,0	12,0	69,0	10

▶ Boquilhas Roscadas c/ Porca
Livre de Halogéneo

▶ Racores Tubo/Caja con Tuerca
Libre de Halogéneo

▶ Simple Straight Tight Pipe-Sheath Fitting
Halogen Free

▶ Raccords de Fixation Tube/Boite
Sans Halogéne



-15° C
+60° C
 Material Termoplástico
Material Termoplástico
Thermoplastic Material
Materiel Termoplastique
 Tubo
Tubo
Conduit
Conduite
 Cores
Colores
Couleurs
Couleurs
 Livre de Halogéneo
Libre de Halogeno
Halogen Free
Sans Halogéne



	Ref.	Ø Ext. (mm)				
R16-HF	R16	16	VD 16	24	PG11	100
R20-HF	R20	20	VD 20	30	PG16	50
R25-HF	R25	25	VD 25	36	PG21	25
R32-HF	R32	32	VD 32	41	M32	25
R40-HF	R40	40	VD 40	30	M40	25
R50-HF	R50	50	VD 50	60	M50	10
R63-HF	R63	63	VD 63	75	M63	5