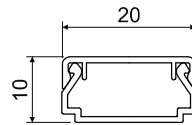


LHD 20X10HF



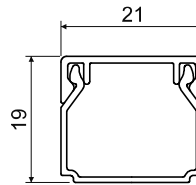
HF	-5 - +60°C	850°C	A1 - F	30 sec.	0,5 J	140 mm ²	Pb Free	IP 40	IK06

- ☑ It does not contain halogen elements, suitable for environments with high concentrations of people.
- ☑ Standard shape.
- ☑ Designed for wall or ceiling mounting.
- ☑ Double lock on lid increasing the trunking's rigidity and ensuring stronger cover fixation.

Accessories			
	conf.	package	EAN
8921HF - end			
	HB	10	8595057698536
8922HF - connecting			
	HB	10	8595057698543
8923HF - bending			
	HB	10	8595057698550
8924HF - branching			
	HB	10	8595057698567
8925HF - inner corner			
	HB	10	8595057698574
8926HF - outer corner			
	HB	10	8595057698581

conf.		L			EAN	note
			m	m		
HD	white	2	96	carton	8595057697744	

LHD 20X20HF



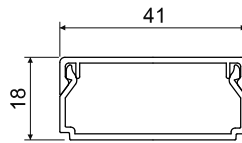
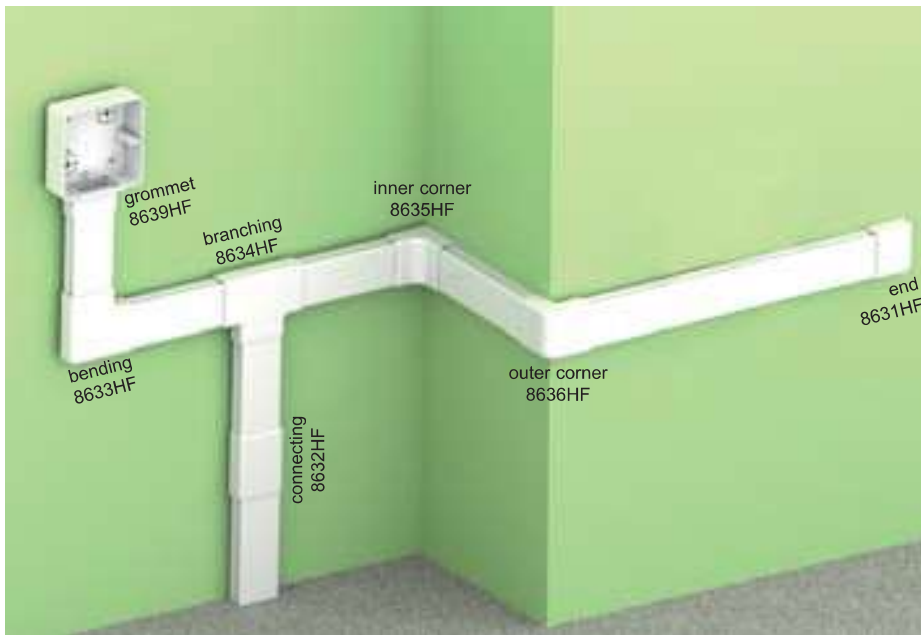
MAT									
HF	-5 - +60°C	850°C	A1 - F	30 sec.	0,5 J	260 mm ²	Pb Free	IP 40	IK06

- ✓ It does not contain halogen elements, suitable for environments with high concentrations of people.
- ✓ Standard shape.
- ✓ Designed for wall or ceiling mounting.
- ✓ Double lock on lid increasing the trunking's rigidity and ensuring stronger cover fixation.

Accessories			
	conf.	package	EAN
8621HF - end			
	HB	10	8595057655676
8622HF - connecting			
	HB	10	8595057655683
8623HF - bending			
	HB	10	8595057655690
8624HF - branching			
	HB	10	8595057655706
8625HF - inner corner			
	HB	10	8595057655713
8626HF - outer corner			
	HB	10	8595057655720
8629HF - grommet			
	HB	10	8595057655737
intended for transition to the LK 80X28 trunking box			

conf.		L		description	EAN	note
		m	m			
HD	white	2	48	carton	8595057657175	

LHD 40X20HF



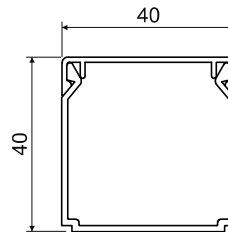
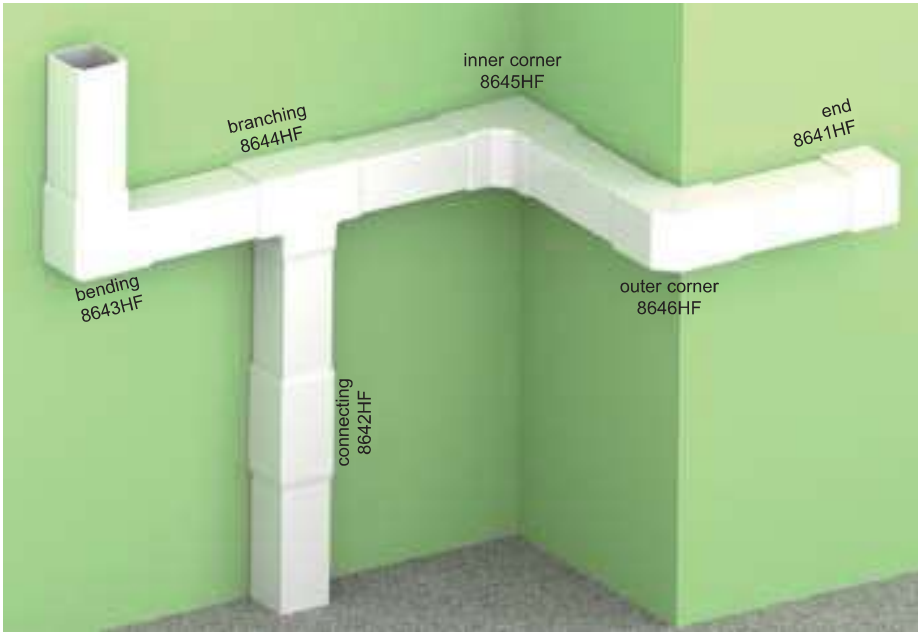
MAT									
HF	-5 - +60°C	850°C	A1 - F	30 sec.	0,5 J	560 mm ²	Pb Free	IP 40	IK06

- ☑ It does not contain halogen elements, suitable for environments with high concentrations of people.
- ☑ Standard shape.
- ☑ Designed for wall or ceiling mounting.
- ☑ Double lock on lid increasing the trunking's rigidity and ensuring stronger cover fixation.

Accessories			
	conf.	package	EAN
8631HF - end			
	HB	10	8595057655744
8632HF - connecting			
	HB	10	8595057655751
8633HF - bending			
	HB	10	8595057655614
8634HF - branching			
	HB	10	8595057655768
8635HF - inner corner			
	HB	10	8595057655775
8636HF - outer corner			
	HB	10	8595057655782
8639HF - grommet			
	HB	10	8595057656642
intended for transition to the LK 80X28 trunking box			

conf.		L		description	EAN	note
		m	m			
HA	white	3	105	folie	8595057656420	
HD	white	2	24	carton	8595057656437	

LHD 40X40HF



MAT
HF
-5 - +60°C
850°C
A1 - F
30 sec.
0,5 J
1300 mm²
Pb Free
IP 40
IK06

- ✓ It does not contain halogen elements, suitable for environments with high concentrations of people.
- ✓ Standard shape.
- ✓ Designed for wall or ceiling mounting.
- ✓ Double lock on lid increasing the trunking's rigidity and ensuring stronger cover fixation.

Accessories			
	conf.	package	EAN
8641HF - end			
	HB	10	8595057655799
8642HF - connecting			
	HB	10	8595057655812
8643HF - bending			
	HB	10	8595057655812
8644HF - branching			
	HB	10	8595057655829
8645HF - inner corner			
	HB	10	8595057655836
8646HF - outer corner			
	HB	10	8595057655843

conf.		L		description	EAN	note
		m	m			
HA	white	3	45	folie	8595057657182	
HD	white	2	20	carton	8595057657199	