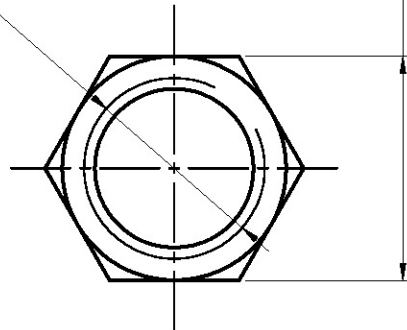


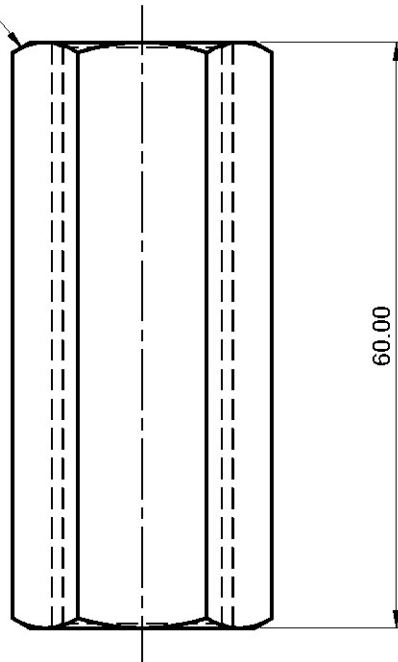
18mm Thread

HEX A/F 23.00



PLAN

CHAMFER BOTH SIDE



ELEVATION

BRASS HEX COUPLING 18MM WITH SHOT BLASTING PROCESS

<p><b>Muller Fix</b></p>	TOLE.	INCH	MM		SIGN.	DATE	REV.DATE
	X	±0.010	±0.25	DRAWN BY :		16/11/10	
	XX	±0.016	±0.40	CHECKED BY :			
	XXX	±0.046	±1.15	APPROVED BY :			
CODE : M126	ITEM NAME : BRASS HEX COUPLING 18MM					MATERIAL : BRASS	
WEIGHT : 116 Gms.	DESCRIPTION :			FINISH :- MATT FINISH		SCALE :	1.5:1
	ALL DIMENSION ARE IN MM			REV. NO. :	REV. NO. : M126		