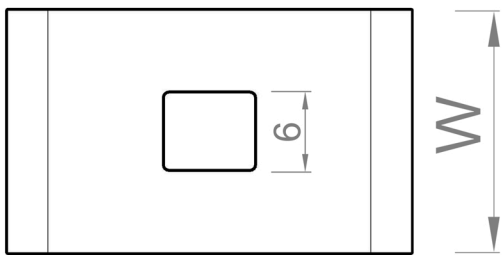


Hold down plate CPU

Description: Hold down plate for the fixing of a support or a threaded rod to the base of the basket tray.



| Ref. Code | H (mm) | W (mm) | L (mm) | Thickness (mm) | Weight (Kg/unit) |
|-----------|--------|--------|--------|----------------|------------------|
| CPUZF | 8 | 18 | 30 | 2,5 | 0,013 |

Suffix Code

Description of Coating / Material

- ZF** Dip-spinning Non-electrolytic Zinc Flake Coating. Corrosion Resistance: Classified 8 according to IEC 61537.
- IN** Austenitic Stainless Steel AISI 304 or AISI 316L. Corrosion Resistance: Classified 9D according to IEC 61537.

