

**NEW**

**JSL**  
Material Eléctrico

# **RIGID VD CONDUITS**

**100% HALOGEN FREE**



FOR HOSPITALS, AIRPORTS  
DATA CENTERS AND PUBLIC BUILDINGS



# HALOGEN FREE RIGID VD CONDUITS



100% halogen free and 100% lead free Rigid conduit.

For strong, medium, light mechanical actions.

Self-extinguishing at 960°/5s – M0.



Thermoplastic



-25°C +90°C



Black Grey



Tied



Self-extinguishable

**M0 960°C**

According  
to standards:

**EN61386-1**



HALOGEN FREE RIGID VD CONDUITS

**FLH** VD CONDUIT  
4442



Length: 3 meters



Crush Resistance



**STRONG**

Mechanical shocks Resistance



**STRONG**



Do not bend  
with spring



Self-extinguishable

**M0 960°C**

MODELS

● Ref VD16FLH  
Cod.: 4442  
Ext. Diam.: 16  
Int. Diam.: 12

● Ref VD25FLH  
Cod.: 4442  
Ext. Diam.: 25  
Int. Diam.: 21.8

● Ref VD40FLH  
Cod.: 4442  
Ext. Diam.: 40  
Int. Diam.: 35

● Ref VD63FLH  
Cod.: 4321  
Ext. Diam.: 63  
Int. Diam.: 57

● Ref VD20FLH  
Cod.: 4442  
Ext. Diam.: 20  
Int. Diam.: 17

● Ref VD32FLH  
Cod.: 4442  
Ext. Diam.: 32  
Int. Diam.: 28.4

● Ref VD50FLH  
Cod.: 4442  
Ext. Diam.: 50  
Int. Diam.: 44.4

According  
to standards:

**EN61386-1**



SCAN + INFO

Ref.	Code	Ext. Diam.	Int. Diam. *	Newtons	Code	Joules	Code	Temp.	Code
VD16FLH	4442	16	12	1250	4	6	4	-25°C +90°C	42
VD20FLH	4442	20	17	1250	4	6	4	-25°C +90°C	42
VD25FLH	4442	25	21,8	1250	4	6	4	-25°C +90°C	42
VD32FLH	4442	32	28,4	1250	4	6	4	-25°C +90°C	42
VD40FLH	4442	40	35	1250	4	6	4	-25°C +90°C	42
VD50FLH	4442	50	44,4	1250	4	6	4	-25°C +90°C	42
VD63FLH	4442	63	57	1250	4	6	4	-25°C +90°C	42

\* Indicative Value

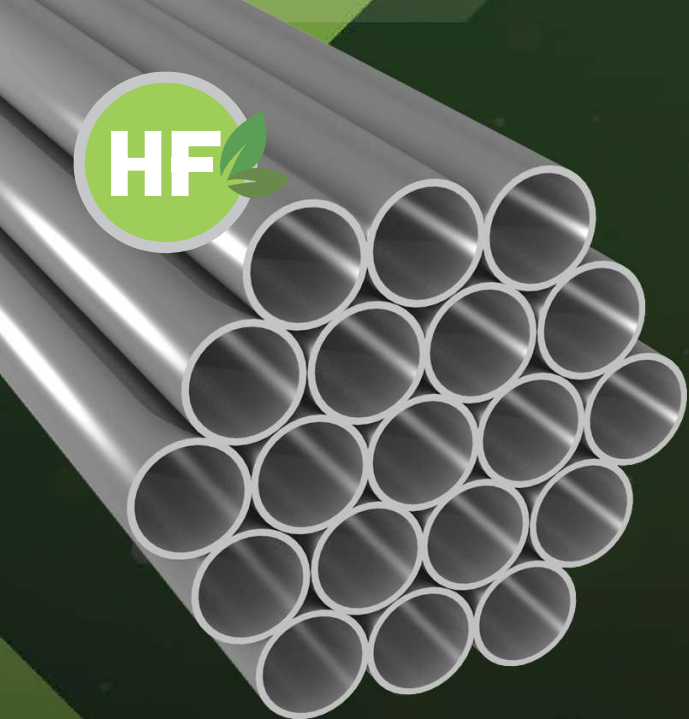




HALOGEN FREE RIGID VD CONDUITS

# MLH VD CONDUIT

3442



Length: 3 meters

Crush Resistance



**MEDIUM**

Mechanical shocks Resistance



**STRONG**



Do not bend with spring



Self-extinguishable

**MO 960°C**

According to standards:

**EN61386-1**



MODELS

● Ref VD16MLH  
Cod.: 3442  
Ext. Diam.: 16  
Int. Diam.: 13.5

● Ref VD20MLH  
Cod.: 3442  
Ext. Diam.: 20  
Int. Diam.: 17.5

● Ref VD25MLH  
Cod.: 3442  
Ext. Diam.: 25  
Int. Diam.: 21.8



SCAN + INFO

Ref.	Code	Ext. Diam.	Int. Diam. *	Newtons	Code	Joules	Code	Temp.	Code
VD16MLH	3442	16	13,5	750	3	6	4	-25°C +90°C	42
VD20MLH	3442	20	17,5	750	3	6	4	-25°C +90°C	42
NEW VD25MLH	3442	25	22,2	750	3	6	4	-25°C +90°C	42

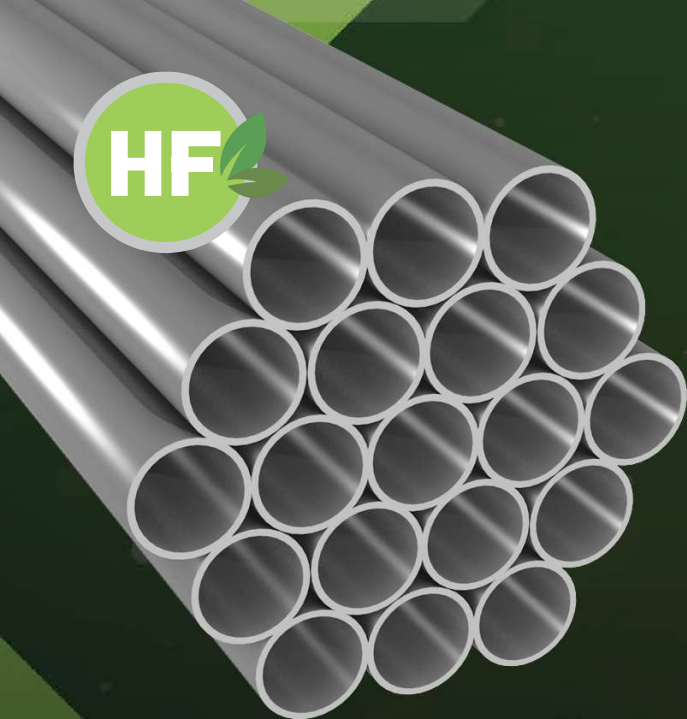
\* Indicative Value



HALOGEN FREE RIGID VD CONDUITS

# LLH VD CONDUIT

2442



Length: 3 meters



MODELS

● Ref VD16LLH  
Cod.: 2442  
Ext. Diam.: 16  
Int. Diam.: 13.8

● Ref VD20LLH  
Cod.: 2442  
Ext. Diam.: 20  
Int. Diam.: 17.5

● Ref VD25LLH  
Cod.: 2442  
Ext. Diam.: 25  
Int. Diam.: 22.2

● Ref VD32LLH  
Cod.: 2442  
Ext. Diam.: 32  
Int. Diam.: 28.8

Crush Resistance



LIGHT

Mechanical shocks Resistance



STRONG



Self-extinguishable

M0 960°C



Do not bend  
with spring

According  
to standards:

EN61386-1



SCAN + INFO

Ref.	Code	Ext. Diam.	Int. Diam. *	Newtons	Code	Joules	Code	Temp.	Code
VD16LLH	2442	16	13,8	320	2	6	4	-25°C +90°C	42
VD20LLH	2442	20	17,5	320	2	6	4	-25°C +90°C	42
VD25LLH	2442	25	22,2	320	2	6	4	-25°C +90°C	42
VD32LLH	2442	32	28,8	320	2	6	4	-25°C +90°C	42

\* Indicative Value



HALOGEN FREE RIGID VD CONDUITS



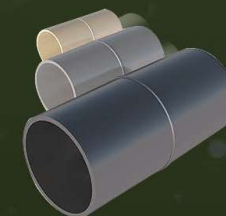
# ACCESSORIES FOR RIGID CONDUITS

## TOP ENDS FOR RIGID CONDUIT



Ref.	For	Dim. (mm)	Temp.
EC16	VD 16	16	-25°C +90°C
EC20	VD 20	20	-25°C +90°C
EC25	VD 25	25	-25°C +90°C

## JOINTS FOR RIGID CONDUIT



Ref.	For	Dim. (mm)	Temp.
U407-VD16LH	VD 16	16	-25°C +90°C
U408-VD20LH	VD 20	20	-25°C +90°C
U409-VD25LH	VD 25	25	-25°C +90°C
U410-VD32LH	VD 32	32	-25°C +90°C
U411-VD40LH	VD 40	40	-25°C +90°C
U412-VD50LH	VD 50	50	-25°C +90°C
U413-VD63LH	VD 63	63	-25°C +90°C

## BENDS FOR RIGID CONDUIT



Ref.	For	Dim. (mm)	Temp.
C-16VDLH	VD 16	16	-25°C +90°C
C-20VDLH	VD 20	20	-25°C +90°C
C-25VDLH	VD 25	25	-25°C +90°C
C-32VDLH	VD 32	32	-25°C +90°C
C-40VDLH	VD 40	40	-25°C +90°C
C-50VDLH	VD 50	50	-25°C +90°C

## GROMMETS FOR RIGID CONDUIT



Ref.	For	Dim. (mm)	Temp.
284-VD12	VD 12	12	-25°C +90°C
285-VD16	VD 16	16	-25°C +90°C
286-VD20	VD 20	20	-25°C +90°C
287-VD25	VD 25	25	-25°C +90°C



Halogen free



-25°C +90°C



Black Grey  
Cream White



Thermoplastic

